

For Research Use Only

MME,CD10 Recombinant antibody, PBS Only

Catalog Number:84181-4-PBS



Basic Information

Catalog Number: 84181-4-PBS	GenBank Accession Number: BC101658	Purification Method: Protein A purification
Size: 1 mg/ml	GeneID (NCBI): 4311	CloneNo.: 241322D7
Source: Rabbit	UNIPROT ID: P08473	
Isotype: IgG	Full Name: membrane metallo-endorpeptidase	
	Calculated MW: 750 aa, 86 kDa	
	Observed MW: 100 kDa	

Applications

Tested Applications:
WB, Indirect ELISA

Species Specificity:
human

Background Information

CD10, also known as neprilysin, membrane metallo-endorpeptidase (MME), neutral endopeptidase (NEP), or common acute lymphoblastic leukemia antigen (CALLA), is a 100-kDa type II transmembrane glycoprotein belonging to peptidase M13 family (PMID: 7760013; 8102558). Among hematopoietic cells, CD10 is expressed on granulocytes, B cell precursors, mature germinal center B cells, a subset of immature thymocytes (PMID: 13679451). CD10 is also expressed on a variety of nonhematopoietic cell types, including bronchial epithelial cells, cultured fibroblasts, bone marrow stromal cells, renal proximal tubular epithelial cells, breast myoepithelium, biliary canaliculi (PMID: 8102558). CD10 is a cell surface peptidase that cleaves peptide bonds on the amino side of hydrophobic amino acids and inactivates a variety of physiologically active peptides. Loss or decreases in CD10 expression have been reported in a variety of malignancies (PMID: 16054017).

Storage

Storage:
Store at -80°C.
The product is shipped with ice packs. Upon receipt, store it immediately at -80°C

Storage Buffer:
PBS Only

For technical support and original validation data for this product please contact:

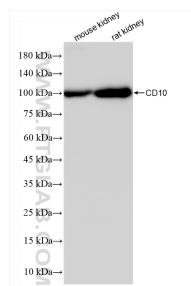
T: 4006900926

E: Proteintech-CN@ptglab.com

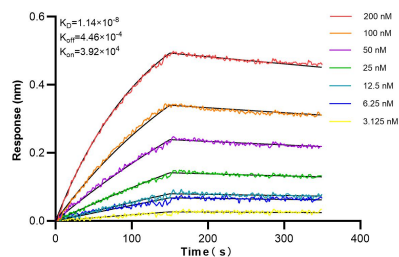
W: ptgcn.com

This product is exclusively available under Proteintech Group brand and is not available to purchase from any other manufacturer.

Selected Validation Data



Various lysates were subjected to SDS PAGE followed by western blot with 84181-4-RR (MME,CD10 antibody) at dilution of 1:10000 incubated at room temperature for 1.5 hours. This data was developed using the same antibody clone with 84181-4-PBS in a different storage buffer formulation.



Biolayer interferometry (BLI) kinetic assays of 84181-4-RR against Human MME,CD10 were performed. The affinity constant is 11.4 nM.