

For Research Use Only

Kininogen 1 Recombinant antibody, PBS Only (Capture)

Catalog Number: 84175-4-PBS



Basic Information

Catalog Number:

84175-4-PBS

Concentration:

1 mg/ml

Source:

Rabbit

Isotype:

IgG

GenBank Accession Number:

NM_001102416.3

GeneID (NCBI):

3827

UNIPROT ID:

P01042-1

Full Name:

kininogen 1

Calculated MW:

72kDa

Purification Method:

Protein A purification

CloneNo.:

241397G9

Applications

Tested Applications:

Cytometric bead array, Sandwich ELISA, Indirect ELISA,
Sample test

Species Specificity:

human

Background Information

Storage

Storage:

Store at -80°C.

The product is shipped with ice packs. Upon receipt, store it immediately at -80°C

Storage Buffer:

PBS Only

For technical support and original validation data for this product please contact:

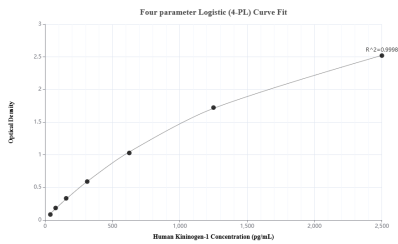
T: 4006900926

E: Proteintech-CN@ptglab.com

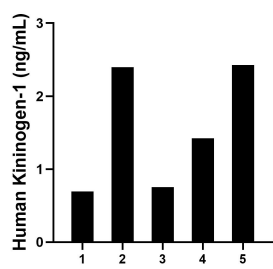
W: ptgcn.com

This product is exclusively available under Proteintech Group brand and is not available to purchase from any other manufacturer.

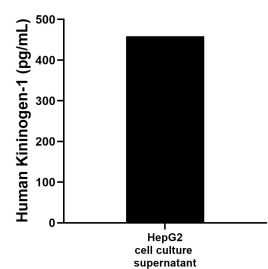
Selected Validation Data



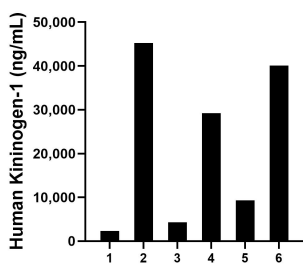
Sandwich ELISA standard curve of MP01081-2, Human Kininogen-1 Recombinant Matched Antibody Pair - PBS only. 84175-4-PBS was coated to a plate as the capture antibody and incubated with serial dilutions of standard Eg1162. 84175-2-PBS was HRP conjugated as the detection antibody. Range: 39.1-2500pg/mL



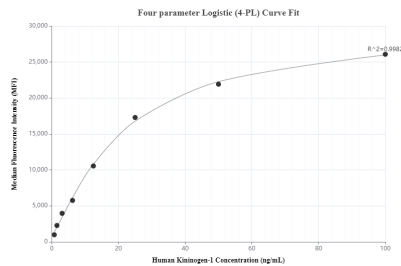
Saliva of five individual healthy human donors was measured. The human Kininogen-1 concentration of detected samples was determined to be 1.55 ng/mL with a range of 0.70 - 2.43 ng/mL



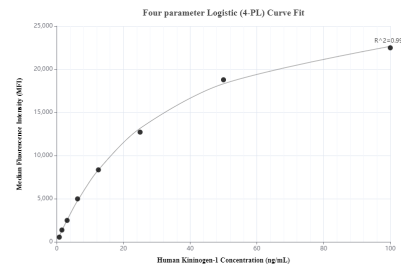
HepG2 (human hepatocellular carcinoma cells) was cultured in DMEM supplemented with 10% fetal bovine serum, 2.5 mM L-glutamine, 100 U/mL penicillin, and 100 µg/mL streptomycin sulfate. An aliquot of the cell culture supernate was removed, assayed for human Kininogen-1, and measured 458.7 pg/mL



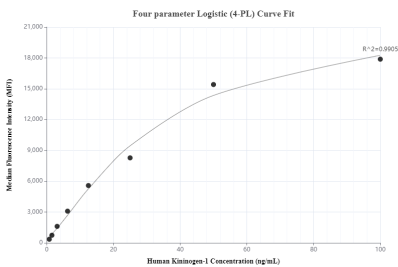
Serum of six individual healthy human donors was measured. The human Kininogen-1 concentration of detected samples was determined to be 21,735.55 ng/mL with a range of 2,325.73 - 45,247.60 ng/mL



Cytometric bead array standard curve of MP01081-1, Kininogen-1 Recombinant Matched Antibody Pair, PBS Only. Capture antibody: 84175-4-PBS. Detection antibody: 84175-3-PBS. Standard: Eg1162. Range: 0.781-100 ng/mL



Cytometric bead array standard curve of MP01081-2, Kininogen-1 Recombinant Matched Antibody Pair, PBS Only. Capture antibody: 84175-4-PBS. Detection antibody: 84175-2-PBS. Standard: Eg1162. Range: 0.781-100 ng/mL



Cytometric bead array standard curve of MP01081-3, Kininogen-1 Recombinant Matched Antibody Pair, PBS Only. Capture antibody: 84175-4-PBS. Detection antibody: 84175-1-PBS. Standard: Eg1162. Range: 0.781-100 ng/mL