

For Research Use Only

GEMIN5 Recombinant antibody, PBS Only (Detector)

Catalog Number: 84171-3-PBS

Featured Product



Basic Information

Catalog Number:

84171-3-PBS

Concentration:

1 mg/ml

Source:

Rabbit

Isotype:

IgG

Immunogen Catalog Number:

AG19220

GenBank Accession Number:

BC113614

GeneID (NCBI):

25929

UNIPROT ID:

Q8TEQ6

Full Name:

gem (nuclear organelle) associated protein 5

Calculated MW:

1508 aa, 169 kDa

Purification Method:

Protein A purification

CloneNo.:

241205D8

Applications

Tested Applications:

WB, IF/ICC, Cytometric bead array, Indirect ELISA

Species Specificity:

human

Background Information

GEMIN5 also named as Gem associated protein 5 is a 1508 amino-acid protein, which belongs to the WD repeat gemin-5 family. The molecular weight of GEMIN5 is 168 kDa. GEMIN5 is a component of the SMN complex, which plays an essential role in spliceosomal snRNP assembly in the cytoplasm and is required for pre-mRNA splicing in the nucleus. GEMIN5 is identified as the factor that allows the SMN complex to distinguish snRNAs from other cellular RNAs for snRNP biogenesis. GEMIN5 is found in nucleoplasm, nuclear bodies and cytoplasm.

Storage

Storage:

Store at -80°C.

The product is shipped with ice packs. Upon receipt, store it immediately at -80°C

Storage Buffer:

PBS only, pH7.3

For technical support and original validation data for this product please contact:

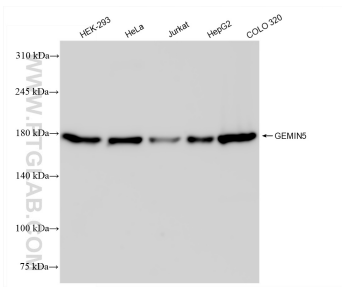
T: 4006900926

E: Proteintech-CN@ptglab.com

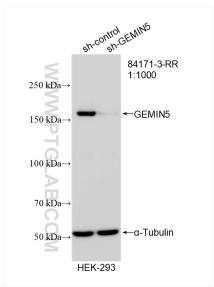
W: ptgcn.com

This product is exclusively available under Proteintech Group brand and is not available to purchase from any other manufacturer.

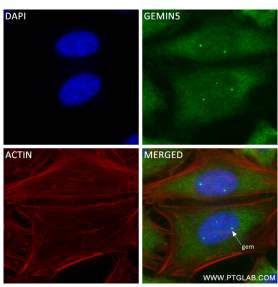
Selected Validation Data



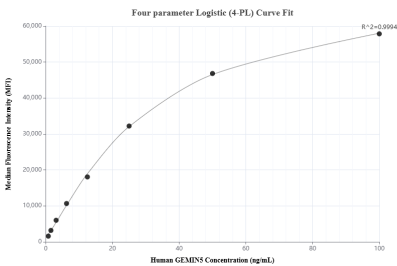
Various lysates were subjected to SDS PAGE followed by western blot with 84171-3-RR (GEMIN5 antibody) at dilution of 1:10000 incubated at room temperature for 1.5 hours. This data was developed using the same antibody clone with 84171-3-PBS in a different storage buffer formulation.



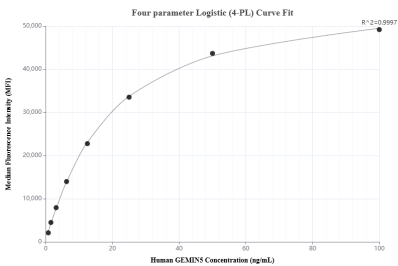
WB result of GEMIN5 antibody (84171-3-RR; 1:1000; incubated at room temperature for 1.5 hours) with sh-Control and sh-GEMIN5 transfected HEK-293 cells. This data was developed using the same antibody clone with 84171-3-PBS in a different storage buffer formulation.



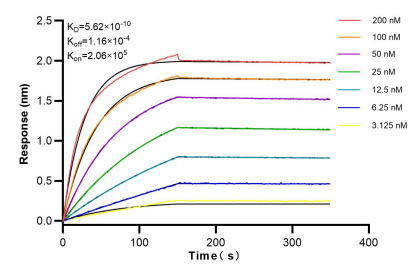
Immunofluorescent analysis of (4% PFA) fixed HeLa cells using GEMIN5 antibody (84171-3-RR, Clone: 241205D8) at dilution of 1:250 and CoraLite®488-Conjugated Goat Anti-Rabbit IgG(H+L) (SA00013-2), CL594-Phalloidin (red). This data was developed using the same antibody clone with 84171-3-PBS in a different storage buffer formulation.



Cytometric bead array standard curve of MP01070-1, GEMIN5 Recombinant Matched Antibody Pair, PBS Only. Capture antibody: 84171-1-PBS. Detection antibody: 84171-3-PBS. Standard: Ag19220. Range: 0.781-100 ng/mL.



Cytometric bead array standard curve of MP01070-3, GEMIN5 Recombinant Matched Antibody Pair, PBS Only. Capture antibody: 84171-4-PBS. Detection antibody: 84171-3-PBS. Standard: Ag19220. Range: 0.781-100 ng/mL.



Bi-layer interferometry (BLI) kinetic assays of 84171-3-RR against Human GEMIN5 were performed. The affinity constant is 0.562 nM.