

For Research Use Only

# PRKAG2 Recombinant monoclonal antibody, PBS Only (Capture)

Catalog Number: 84169-6-PBS



## Basic Information

Catalog Number:

84169-6-PBS

Source:

Rabbit

Isotype:

IgG

Immunogen Catalog Number:

AG3214

GenBank Accession Number:

BC020540

GeneID (NCBI):

51422

UNIPROT ID:

Q9UGJ0

Full Name:

protein kinase, AMP-activated,  
gamma 2 non-catalytic subunit

Calculated MW:

569 aa, 63 kDa

Purification Method:

Protein A purification

CloneNo.:

260578G8

## Applications

Tested Applications:

Cytometric bead array, Indirect ELISA

Species Specificity:

human

## Background Information

### Storage

Storage:

Store at -80°C.

**The product is shipped with ice packs. Upon receipt, store it immediately at -80°C**

Storage Buffer:

PBS only, pH7.3

For technical support and original validation data for this product please contact:

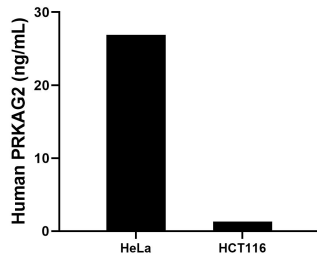
T: 4006900926

E: [Proteintech-CN@ptglab.com](mailto:Proteintech-CN@ptglab.com)

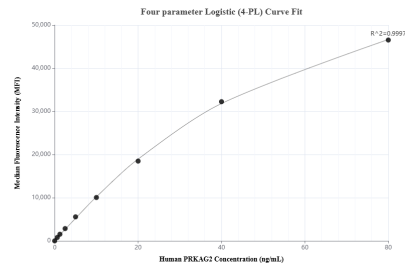
W: [ptgcn.com](http://ptgcn.com)

**This product is exclusively available under Proteintech Group brand and is not available to purchase from any other manufacturer.**

## Selected Validation Data



The mean PRKAG2 concentration was determined to be 26.9 ng/mL in HeLa cell extract based on a 1.0 mg/mL extract load, 1.3 ng/mL in HCT116 cell extract based on a 1.0 mg/mL extract load.



Cytometric bead array standard curve of MP01102-2, PRKAG2 Recombinant Matched Antibody Pair, PBS Only. Capture antibody: 84169-6-PBS. Detection antibody: 84169-5-PBS. Standard: Ag3214. Range: 0.625-80 ng/mL.