

For Research Use Only

# PDCD4 Recombinant antibody, PBS Only (Detector)

Catalog Number: 84162-2-PBS



## Basic Information

Catalog Number:

84162-2-PBS

Size:

1 mg/ml

Source:

Rabbit

Isotype:

IgG

Immunogen Catalog Number:

AG3288

GenBank Accession Number:

BC026104

GeneID (NCBI):

27250

UNIPROT ID:

Q53EL6

Full Name:

programmed cell death 4 (neoplastic transformation inhibitor)

Calculated MW:

469 aa, 52 kDa

Purification Method:

Protein A purification

CloneNo.:

241463D9

## Applications

Tested Applications:

Cytometric bead array, Sandwich ELISA, Indirect ELISA, Sample test

Species Specificity:

human

## Background Information

### Storage

Storage:

Store at -80°C.

The product is shipped with ice packs. Upon receipt, store it immediately at -80°C

Storage Buffer:

PBS Only

For technical support and original validation data for this product please contact:

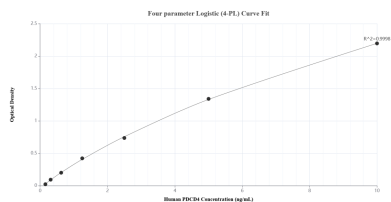
T: 4006900926

E: [Proteintech-CN@ptglab.com](mailto:Proteintech-CN@ptglab.com)

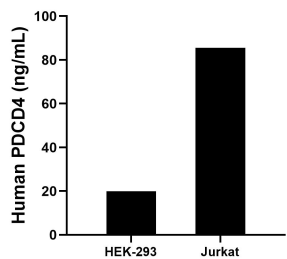
W: [ptgcn.com](http://ptgcn.com)

This product is exclusively available under Proteintech Group brand and is not available to purchase from any other manufacturer.

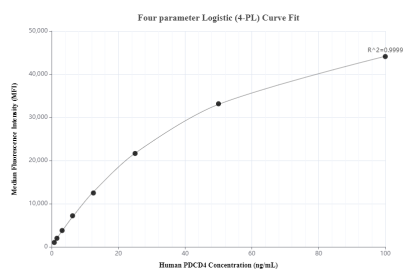
## Selected Validation Data



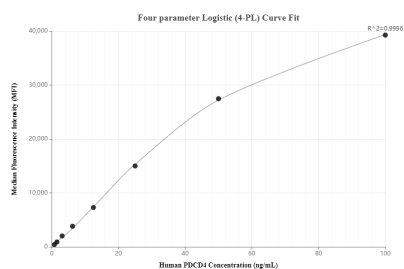
Sandwich ELISA standard curve of MP01098-3, Human PDCD4 Recombinant Matched Antibody Pair - PBS only. 84162-1-PBS was coated to a plate as the capture antibody and incubated with serial dilutions of standard Ag3288. 84162-2-PBS was HRP conjugated as the detection antibody. Range: 0.156-10 ng/mL



The mean PDCD4 concentration was determined to be 20.0 ng/mL in HEK-293 cell extract based on a 1.2 mg/mL extract load and 85.6 ng/mL in Jurkat cell extract based on a 1.5 mg/mL extract load.



Cytometric bead array standard curve of MP01098-2, PDCD4 Recombinant Matched Antibody Pair, PBS Only. Capture antibody: 84162-3-PBS. Detection antibody: 84162-2-PBS. Standard: Ag3288. Range: 0.781-100 ng/mL



Cytometric bead array standard curve of MP01098-3, PDCD4 Recombinant Matched Antibody Pair, PBS Only. Capture antibody: 84162-1-PBS. Detection antibody: 84162-2-PBS. Standard: Ag3288. Range: 0.781-100 ng/mL