

For Research Use Only

# PPP2CA Recombinant antibody, PBS Only (Capture)

Catalog Number: 84155-2-PBS



## Basic Information

Catalog Number:	84155-2-PBS	GenBank Accession Number:	BC031696	Purification Method:	Protein A purification
Concentration:	1 mg/ml	GeneID (NCBI):	5515	CloneNo.:	241112A6
Source:	Rabbit	UNIPROT ID:	P67775		
Isotype:	IgG	Full Name:	protein phosphatase 2 (formerly 2A), catalytic subunit, alpha isoform		
Immunogen Catalog Number:	AG4294	Calculated MW:	309 aa, 36 kDa		
		Observed MW:	36 kDa		

## Applications

**Tested Applications:**  
WB, Cytometric bead array, Indirect ELISA

**Species Specificity:**  
human, mouse, rat, pig

## Background Information

PPP2CA, also named as RP-C and PP2A-alpha, belongs to the PPP phosphatase family and PP-1 subfamily. PP2A can modulate the activity of phosphorylase B kinase casein kinase 2, mitogen-stimulated S6 kinase, and MAP-2 kinase. PP2A activity was modestly decreased in AML patients harboring C-KIT/WT. PP2A is a target for C-KIT/TKD and implicated the potential efficacy of therapies targeting PP2A in such AML in future.

## Storage

**Storage:**  
Store at -80°C.  
**The product is shipped with ice packs. Upon receipt, store it immediately at -80°C**

**Storage Buffer:**  
PBS only, pH7.3

For technical support and original validation data for this product please contact:

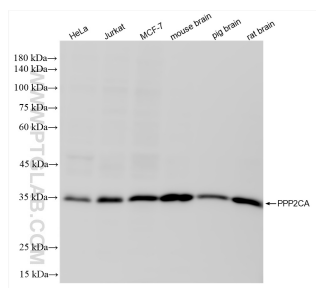
T: 4006900926

E: Proteintech-CN@ptglab.com

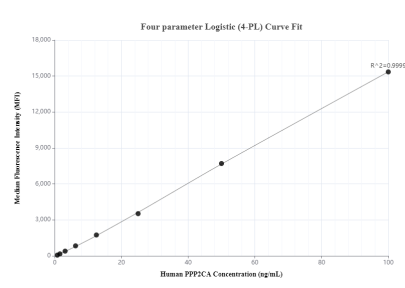
W: ptgcn.com

This product is exclusively available under Proteintech Group brand and is not available to purchase from any other manufacturer.

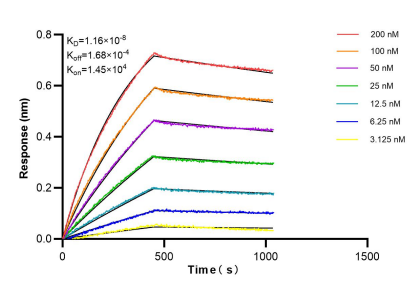
## Selected Validation Data



HeLa cells were subjected to SDS PAGE followed by western blot with 84155-2-RR (PPP2CA antibody) at dilution of 1:2000 incubated at room temperature for 1.5 hours. This data was developed using the same antibody clone with 84155-2-PBS in a different storage buffer formulation.



Cytometric bead array standard curve of MP01058-2, PPP2CA Recombinant Matched Antibody Pair, PBS Only. Capture antibody: 84155-2-PBS. Detection antibody: 84155-4-PBS. Standard: Ag4294. Range: 0.781-100 ng/mL.



Biolayer interferometry (BLI) kinetic assays of 84155-2-RR against Human PPP2CA were performed. The affinity constant is 11.6 nM.