

For Research Use Only

# COX-1/Cyclooxygenase-1 Recombinant antibody, PBS Only (Capture/Detector)

Catalog Number: 84151-2-PBS



## Basic Information

Catalog Number:

84151-2-PBS

Size:

1 mg/ml

Source:

Rabbit

Isotype:

IgG

Immunogen Catalog Number:

AG4055

GenBank Accession Number:

BC029840

GeneID (NCBI):

5742

UNIPROT ID:

P23219

Full Name:

prostaglandin-endoperoxide synthase  
1 (prostaglandin G/H synthase and  
cyclooxygenase)

Calculated MW:

599 aa, 69 kDa

Purification Method:

Protein A purification

CloneNo.:

241373B7

## Applications

Tested Applications:

Cytometric bead array, Sandwich ELISA, Indirect ELISA,  
Sample test

Species Specificity:

human

## Background Information

### Storage

Storage:

Store at -80°C.

The product is shipped with ice packs. Upon receipt, store it immediately at -80°C

Storage Buffer:

PBS Only

For technical support and original validation data for this product please contact:

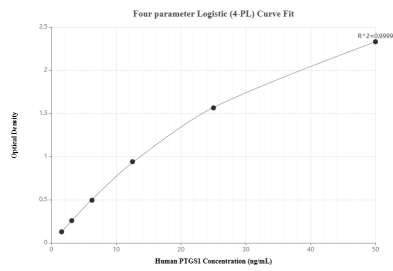
T: 4006900926

E: [Proteintech-CN@ptglab.com](mailto:Proteintech-CN@ptglab.com)

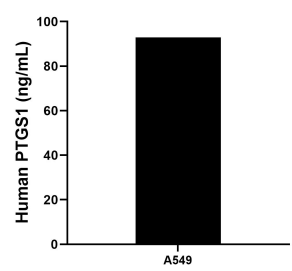
W: [ptgcn.com](http://ptgcn.com)

This product is exclusively available under Proteintech Group brand and is not available to purchase from any other manufacturer.

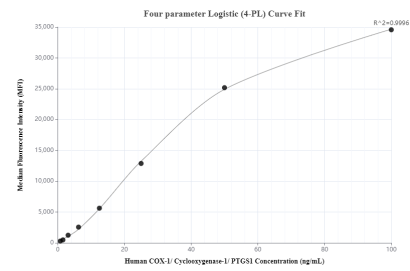
## Selected Validation Data



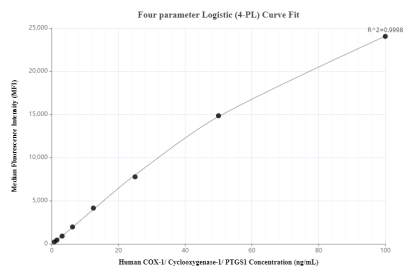
Sandwich ELISA standard curve of MP01068-4, Human COX-1/Cyclooxygenase-1 Recombinant Matched Antibody Pair - PBS only. 84151-5-PBS was coated to a plate as the capture antibody and incubated with serial dilutions of standard Ag4055. 84151-2-PBS was HRP conjugated as the detection antibody. Range: 1.56-50 ng/mL



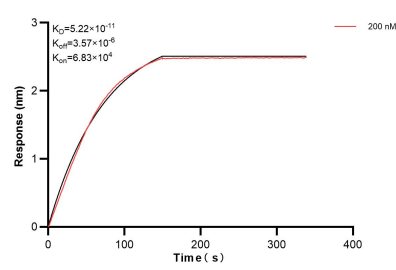
The mean COX-1/Cyclooxygenase-1 concentration was determined to be 92.92 ng/mL in A549 cell extract based on a 2.5 mg/mL extract load.



Cytometric bead array standard curve of MP01068-2, COX-1/Cyclooxygenase-1 Recombinant Matched Antibody Pair, PBS Only. Capture antibody: 84151-2-PBS. Detection antibody: 84151-1-PBS. Standard: Ag4055. Range: 0.781-100 ng/mL



Cytometric bead array standard curve of MP01068-3, COX-1/Cyclooxygenase-1 Recombinant Matched Antibody Pair, PBS Only. Capture antibody: 84151-2-PBS. Detection antibody: 84151-3-PBS. Standard: Ag4055. Range: 0.781-100 ng/mL



Biolayer interferometry (BLI) kinetic assay of 84151-2-PBS against Human COX-1/Cyclooxygenase-1 was performed. The affinity constant is 52.2 pM.