

For Research Use Only

FAM136A Recombinant antibody

Catalog Number: 84150-2-RR



Basic Information

Catalog Number:

84150-2-RR

Concentration:

1000 µg/ml

Source:

Rabbit

Isotype:

IgG

Immunogen Catalog Number:

AG34058

GenBank Accession Number:

BC014975

GeneID (NCBI):

84908

UNIPROT ID:

Q96C01

Full Name:

family with sequence similarity 136, member A

Observed MW:

12 kDa

Purification Method:

Protein A purification

CloneNo.:

241433D12

Recommended Dilutions:

WB 1:5000-1:50000

IHC 1:300-1:1200

IF/ICC 1:125-1:500

Applications

Tested Applications:

WB, IHC, IF/ICC, FC (Intra), ELISA

Species Specificity:

human, mouse, rat

Note-IHC: suggested antigen retrieval with TE buffer pH 9.0; (*) Alternatively, antigen retrieval may be performed with citrate buffer pH 6.0

Positive Controls:

WB: A549 cells, HeLa cell, Jurkat cell, MCF-7 cell, U2OS cell, mouse testis tissue, rat testis tissue

IHC: mouse testis tissue,

IF/ICC: HeLa cells,

Background Information

FAM136A is an evolutionarily conserved nuclear gene encoding a mitochondrial protein whose specific function is unknown, but which is commonly found in neurosensory epithelial cells, where it plays a role in the electron transport chain of respiration (PMID: 37461313). FAM136A, with a molecular mass of 16-kDa, is normally expressed in the cytoplasm and has been linked to familial Meniere's disease.

Storage

Storage:

Store at -20°C. Stable for one year after shipment.

Storage Buffer:

PBS with 0.02% sodium azide and 50% glycerol, pH7.3

Aliquoting is unnecessary for -20°C storage

For technical support and original validation data for this product please contact:

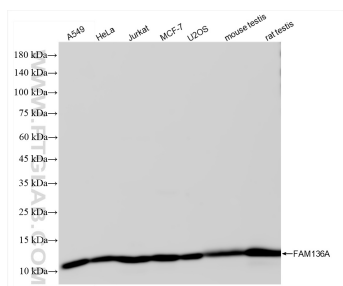
T: 4006900926

E: Proteintech-CN@ptglab.com

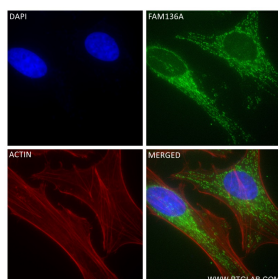
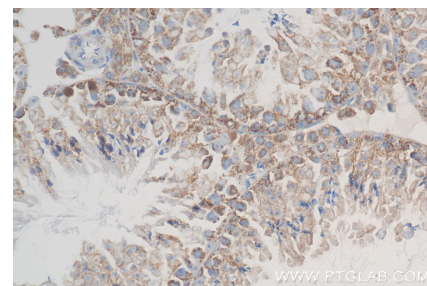
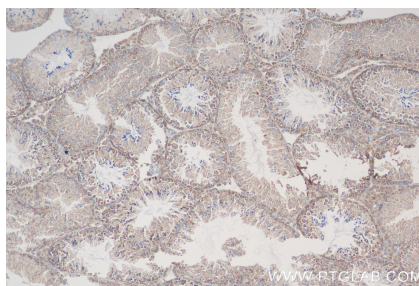
W: ptgcn.com

This product is exclusively available under Proteintech Group brand and is not available to purchase from any other manufacturer.

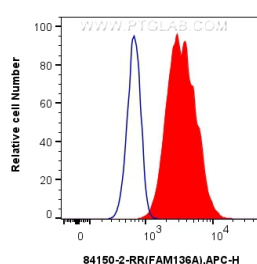
Selected Validation Data



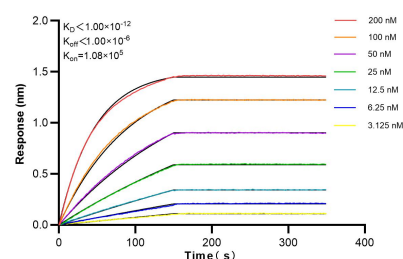
Various lysates were subjected to SDS PAGE followed by western blot with 84150-2-RR (FAM136A antibody) at dilution of 1:10000 incubated at room temperature for 1.5 hours.



Immunofluorescent analysis of (4% PFA) fixed HeLa cells using FAM136A antibody (84150-2-RR, Clone: 241433D12) at dilution of 1:250 and CoraLite®488-Conjugated Goat Anti-Rabbit IgG(H+L) (SA00013-2), CL594-Phalloidin (red).



1x10⁶ U2OS cells were intracellularly stained with 0.25 ug FAM136A Recombinant antibody (84150-2-RR, Clone:241433D12) and APC-Conjugated Goat Anti-Rabbit IgG(H+L)(red), or 0.25 ug Isotype Control (blue). Cells were fixed with 4% PFA and permeabilized with Flow Cytometry Perm Buffer (PF00011-C).



Bilayer interferometry (BLI) kinetic assays of 84150-2-RR against Human FAM136A were performed. The affinity constant is below 1 pM.