

For Research Use Only

FAM136A Recombinant antibody, PBS Only (Capture)

Catalog Number: 84150-2-PBS



Basic Information

Catalog Number:

84150-2-PBS

Concentration:

1 mg/ml

Source:

Rabbit

Isotype:

IgG

Immunogen Catalog Number:

AG34058

GenBank Accession Number:

BC014975

GeneID (NCBI):

84908

UNIPROT ID:

Q96C01

Full Name:

family with sequence similarity 136, member A

Observed MW:

12 kDa

Purification Method:

Protein A purification

CloneNo.:

241433D12

Applications

Tested Applications:

WB, IHC, IF/ICC, FC (Intra), Cytometric bead array, Indirect ELISA

Species Specificity:

human, mouse, rat

Background Information

FAM136A is an evolutionarily conserved nuclear gene encoding a mitochondrial protein whose specific function is unknown, but which is commonly found in neurosensory epithelial cells, where it plays a role in the electron transport chain of respiration (PMID: 37461313). FAM136A, with a molecular mass of 16-kDa, is normally expressed in the cytoplasm and has been linked to familial Meniere's disease.

Storage

Storage:

Store at -80°C.

The product is shipped with ice packs. Upon receipt, store it immediately at -80°C

Storage Buffer:

PBS only, pH7.3

For technical support and original validation data for this product please contact:

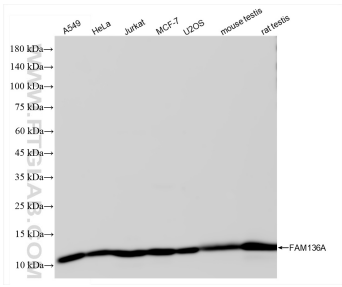
T: 4006900926

E: Proteintech-CN@ptglab.com

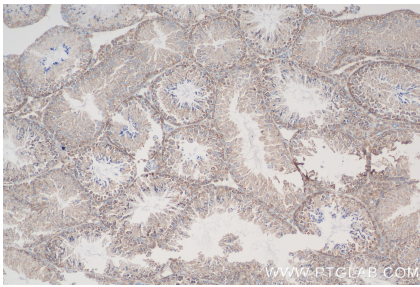
W: ptgcn.com

This product is exclusively available under Proteintech Group brand and is not available to purchase from any other manufacturer.

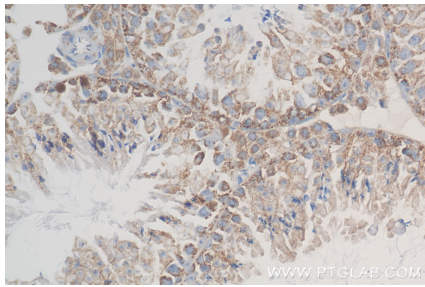
Selected Validation Data



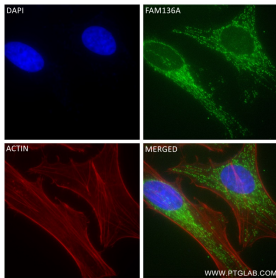
Various lysates were subjected to SDS PAGE followed by western blot with 84150-2-RR (FAM136A antibody) at dilution of 1:10000 incubated at room temperature for 1.5 hours. This data was developed using the same antibody clone with 84150-2-PBS in a different storage buffer formulation.



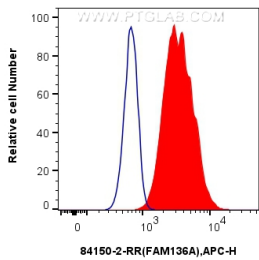
Immunohistochemical analysis of paraffin-embedded mouse testis tissue slide using 84150-2-RR (FAM136A antibody) at dilution of 1:600 (under 10x lens). Heat mediated antigen retrieval with Tris-EDTA buffer (pH 9.0). This data was developed using the same antibody clone with 84150-2-PBS in a different storage buffer formulation.



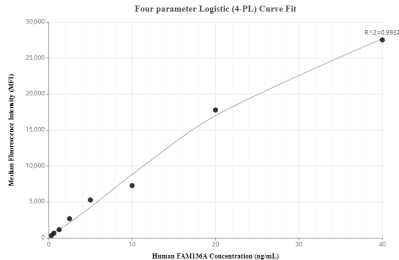
Immunohistochemical analysis of paraffin-embedded mouse testis tissue slide using 84150-2-RR (FAM136A antibody) at dilution of 1:600 (under 40x lens). Heat mediated antigen retrieval with Tris-EDTA buffer (pH 9.0). This data was developed using the same antibody clone with 84150-2-PBS in a different storage buffer formulation.



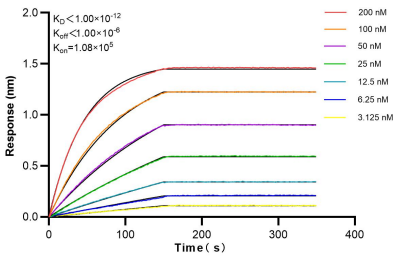
Immunofluorescent analysis of (4% PFA) fixed HeLa cells using FAM136A antibody (84150-2-RR, Clone: 241433D12) at dilution of 1:250 and CoraLite®488-Conjugated Goat Anti-Rabbit IgG(H+L) (SA00013-2), CL594-Phalloidin (red). This data was developed using the same antibody clone with 84150-2-PBS in a different storage buffer formulation.



1x10⁶ U2OS cells were intracellularly stained with 0.25 ug FAM136A Recombinant antibody (84150-2-RR, Clone:241433D12) and APC-Conjugated Goat Anti-Rabbit IgG(H+L)(red), or 0.25 ug Isotype Control (blue). Cells were fixed with 4% PFA and permeabilized with Flow Cytometry Perm Buffer (PF00011-C). This data was developed using the same antibody clone with 84150-2-PBS in a different storage buffer formulation.



Cytometric bead array standard curve of MP01066-3, FAM136A Recombinant Matched Antibody Pair, PBS Only. Capture antibody: 84150-2-PBS. Detection antibody: 84150-5-PBS. Standard: Ag34058. Range: 0.313-40 ng/mL



Biolayer interferometry (BLI) kinetic assays of 84150-2-RR against Human FAM136A were performed. The affinity constant is below 1 pM.