

For Research Use Only

ARHGEF11 Recombinant antibody, PBS Only (Capture)

Catalog Number: 84149-4-PBS



Basic Information

Catalog Number:	84149-4-PBS	GenBank Accession Number:	Purification Method:
Size:	1 mg/ml	GeneID (NCBI):	Protein A purification
Source:	Rabbit	9826	CloneNo.:
Isotype:	IgG	UNIPROT ID:	241427G2
Immunogen Catalog Number:	AG33104	O15085	
		Full Name:	
		Rho guanine nucleotide exchange factor (GEF) 11	
		Calculated MW:	
		168 kDa	
		Observed MW:	
		220 kDa	

Applications

Tested Applications:
WB, Cytometric bead array, Indirect ELISA

Species Specificity:
human

Background Information

ARHGEF11 (Rho guanine nucleotide exchange factor 11) is a specific guanine nucleotide exchange factor (GEF) for RhoA, which is a critical regulator of actin cytoskeleton dynamics and organization of dendritic spines and inhibitor of spine maintenance (PMID: 28036092). ARHGEF11 has been proven to promote tumor metastasis in glioblastoma and ovarian carcinoma (PMID: 33122451).

Storage

Storage:
Store at -80°C.
The product is shipped with ice packs. Upon receipt, store it immediately at -80°C

Storage Buffer:
PBS Only

For technical support and original validation data for this product please contact:

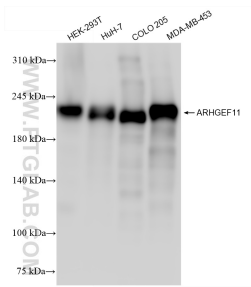
T: 4006900926

E: Proteintech-CN@ptglab.com

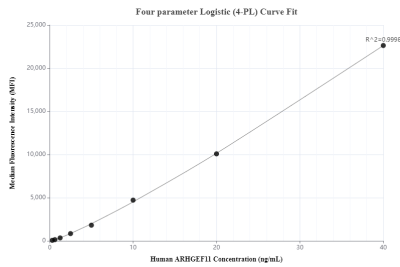
W: ptgcn.com

This product is exclusively available under Proteintech Group brand and is not available to purchase from any other manufacturer.

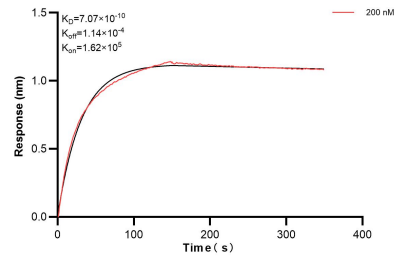
Selected Validation Data



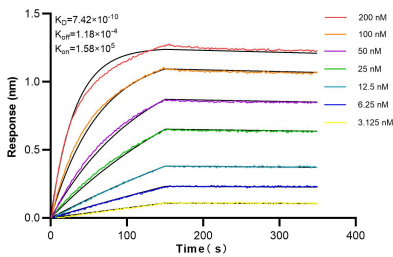
Various lysates were subjected to SDS PAGE followed by western blot with 84149-4-RR (ARHGEF11 antibody) at dilution of 1:8000 incubated at room temperature for 1.5 hours. This data was developed using the same antibody clone with 84149-4-PBS in a different storage buffer formulation.



Cytometric bead array standard curve of MP01063-3, ARHGEF11 Recombinant Matched Antibody Pair, PBS Only. Capture antibody: 84149-4-PBS. Detection antibody: 84149-2-PBS. Standard: Ag33104. Range: 0.313-40 ng/mL.



Biolayer interferometry (BLI) kinetic assay of 84149-4-PBS against Human ARHGEF11 was performed. The affinity constant is 0.707 nM.



Biolayer interferometry (BLI) kinetic assays of 84149-4-RR against Human ARHGEF11 were performed. The affinity constant is 0.742 nM.