

For Research Use Only

Mouse CD80 Recombinant antibody, PBS Only (Capture/Detector)

Catalog Number: 84137-4-PBS



Basic Information

Catalog Number:

84137-4-PBS

Size:

1 mg/ml

Source:

Rabbit

Isotype:

IgG

GenBank Accession Number:

NM_009855.2

GeneID (NCBI):

12519

UNIPROT ID:

Q00609-1

Full Name:

CD80 antigen

Calculated MW:

35 kDa

Purification Method:

Protein A purification

CloneNo.:

241371E12

Applications

Tested Applications:

Cytometric bead array, Sandwich ELISA, Indirect ELISA,
Sample test

Species Specificity:

mouse

Background Information

Storage

Storage:

Store at -80°C.

The product is shipped with ice packs. Upon receipt, store it immediately at -80°C

Storage Buffer:

PBS Only

For technical support and original validation data for this product please contact:

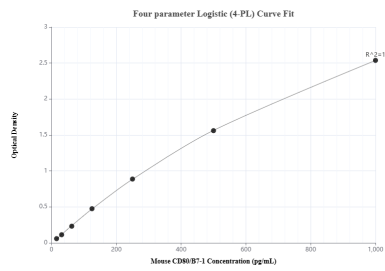
T: 4006900926

E: Proteintech-CN@ptglab.com

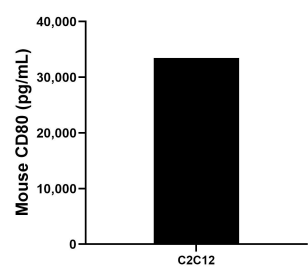
W: ptgcn.com

This product is exclusively available under Proteintech Group brand and is not available to purchase from any other manufacturer.

Selected Validation Data



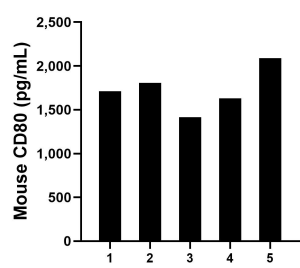
Sandwich ELISA standard curve of MP01051-4, Mouse CD80/B7-1 Recombinant Matched Antibody Pair - PBS only. 84137-6-PBS was coated to a plate as the capture antibody and incubated with serial dilutions of standard Eg0840. 84137-4-PBS was HRP conjugated as the detection antibody. Range: 15.6-1000 pg/mL



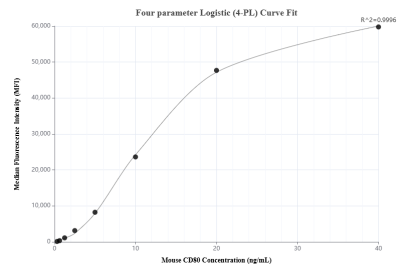
The mean CD80/B7-1 concentration was determined to be 33,454.1 pg/mL in C2C12 cell extract based on a 3.2 mg/mL extract load.



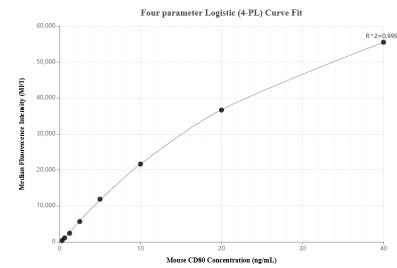
Mouse spleen tissue was cultured in RPMI supplemented with 10% fetal bovine serum, 5 μ M β -mercaptoethanol, 2 mM L-glutamine, 100 U/mL penicillin, and 100 μ g/mL streptomycin sulfate. An aliquot of the cell culture supernate was removed, assayed for mouse CD80/B7-1, and measured 10.44 pg/mL



Serum of five mice was measured. The mouse CD80/B7-1 concentration of detected samples was determined to be 1,731.45 pg/mL with a range of 1,416.7 - 2,090.4 ng/mL



Cytometric bead array standard curve of MP01051-1, MOUSE CD80 Recombinant Matched Antibody Pair, PBS Only. Capture antibody: 84137-2-PBS. Detection antibody: 84137-4-PBS. Standard: Eg0840. Range: 0.313-40 ng/mL



Cytometric bead array standard curve of MP01051-2, MOUSE CD80 Recombinant Matched Antibody Pair, PBS Only. Capture antibody: 84137-4-PBS. Detection antibody: 84137-1-PBS. Standard: Eg0840. Range: 0.313-40 ng/mL