

For Research Use Only

IL-1 beta Recombinant antibody

Catalog Number: 84136-5-RR



Basic Information

Catalog Number:

84136-5-RR

Concentration:

1000 ug/ml

Source:

Rabbit

Isotype:

IgG

GenBank Accession Number:

NM_008361.4

GeneID (NCBI):

16176

UNIPROT ID:

P10749

Full Name:

interleukin 1 beta

Calculated MW:

31kDa

Observed MW:

31 kDa

Purification Method:

Protein A purification

CloneNo.:

241364D5

Recommended Dilutions:

WB 1:5000-1:50000

Applications

Tested Applications:

WB, ELISA

Species Specificity:

human

Positive Controls:

WB : LPS and Brefeldin A treated THP-1 cells,

Background Information

Interleukin-1, produced mainly by blood monocytes, mediates the panoply of host reactions collectively known as acute phase response. It is identical to endogenous pyrogen. The multiple biologic activities that define IL1 are properties of a 15- to 18-kD protein that is derived from a 30- to 35-kD precursor. Interleukin 1 β (IL-1 β) is a member of the interleukin 1 cytokine family. It is a pro-inflammatory cytokine against infection, playing an important role in the pathogenesis of cancers. It signals through various adaptor proteins and kinases that lead to activation of numerous downstream targets.

Storage

Storage:

Store at -20°C. Stable for one year after shipment.

Storage Buffer:

PBS with 0.02% sodium azide and 50% glycerol pH 7.3.

Aliquoting is unnecessary for -20°C storage

For technical support and original validation data for this product please contact:

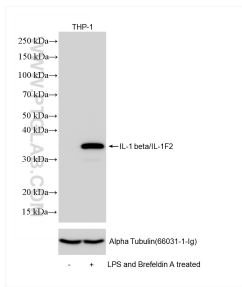
T: 4006900926

E: Proteintech-CN@ptglab.com

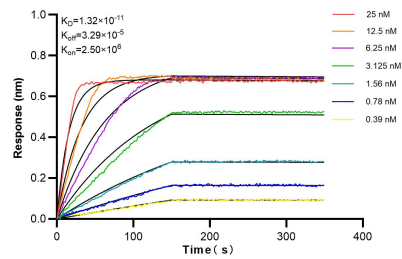
W: ptgcn.com

This product is exclusively available under Proteintech Group brand and is not available to purchase from any other manufacturer.

Selected Validation Data



LPS and Brefeldin A treated THP-1 cells were subjected to SDS PAGE followed by western blot with 84136-5-RR (IL-1 beta antibody) at dilution of 1:10000 incubated at room temperature for 1.5 hours.



Biolayer interferometry (BLI) kinetic assays of 84136-5-RR against Mouse IL-1 beta were performed. The affinity constant is 13.2 pM.