

For Research Use Only

PCDH8 Recombinant antibody, PBS Only (Detector)

Catalog Number: 84134-3-PBS



Basic Information

Catalog Number:

84134-3-PBS

Concentration:

1000 µg/ml

Source:

Rabbit

Isotype:

IgG

Immunogen Catalog Number:

AG5090

GenBank Accession Number:

BC036025

GeneID (NCBI):

5100

UNIPROT ID:

O95206

Full Name:

protocadherin 8

Calculated MW:

1070 aa, 113 kDa

Observed MW:

104-120 kDa

Purification Method:

Protein A purification

CloneNo.:

241362C6

Applications

Tested Applications:

WB, Cytometric bead array, Indirect ELISA

Species Specificity:

human, mouse

Background Information

Protocadherin-8 (PCDH8) is a member of the protocadherin family that belongs to the cadherin superfamily. Protocadherins are calcium-dependent adhesion proteins and have been implicated in neural cell-cell interactions. They are abundantly expressed in the central nervous system during embryonic development and in adulthood (PMID: 24214103). PCDH8 is a tumor suppressor involved in tumorigenesis.

Storage

Storage:

Store at -80°C.

The product is shipped with ice packs. Upon receipt, store it immediately at -80°C

Storage Buffer:

PBS only, pH7.3

For technical support and original validation data for this product please contact:

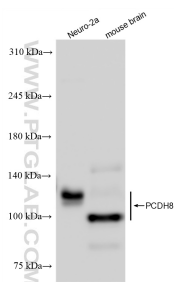
T: 4006900926

E: Proteintech-CN@ptglab.com

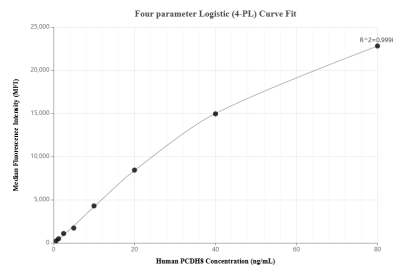
W: ptgcn.com

This product is exclusively available under Proteintech Group brand and is not available to purchase from any other manufacturer.

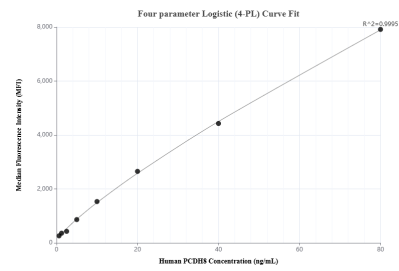
Selected Validation Data



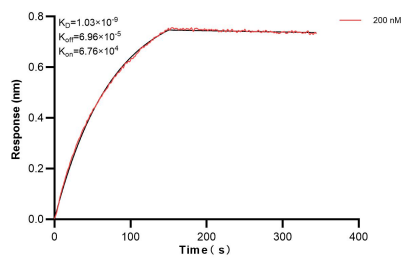
Various lysates were subjected to SDS PAGE followed by western blot with 84134-3-RR (PCDH8 antibody) at dilution of 1:10000 incubated at room temperature for 1.5 hours. This data was developed using the same antibody clone with 84134-3-PBS in a different storage buffer formulation.



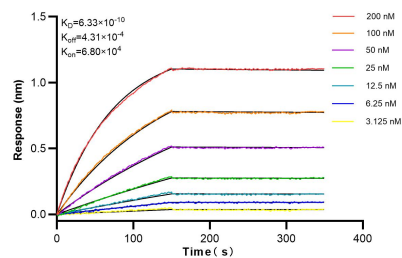
Cytometric bead array standard curve of MP01033-1, PCDH8 Recombinant Matched Antibody Pair, PBS Only. Capture antibody: 84134-4-PBS. Detection antibody: 84134-3-PBS. Standard: Ag5090. Range: 0.625-80 ng/mL.



Cytometric bead array standard curve of MP01033-2, PCDH8 Recombinant Matched Antibody Pair, PBS Only. Capture antibody: 84134-1-PBS. Detection antibody: 84134-3-PBS. Standard: Ag5090. Range: 0.625-80 ng/mL.



Bi-layer interferometry (BLI) kinetic assay of 84134-3-PBS against Human PCDH8 was performed. The affinity constant is 1.03 nM.



Bi-layer interferometry (BLI) kinetic assays of 84134-3-RR against Human PCDH8 were performed. The affinity constant is 0.633 nM.