

For Research Use Only

FABP6 Recombinant antibody, PBS Only (Capture/Detector)

Catalog Number: 84132-2-PBS



Basic Information

Catalog Number:

84132-2-PBS

Size:

1 mg/ml

Source:

Rabbit

Isotype:

IgG

Immunogen Catalog Number:

AG4788

GenBank Accession Number:

BC022489

GeneID (NCBI):

2172

UNIPROT ID:

P51161

Full Name:

fatty acid binding protein 6, ileal

Calculated MW:

177 aa, 20 kDa

Purification Method:

Protein A purification

CloneNo.:

241095A11

Applications

Tested Applications:

Cytometric bead array, Sandwich ELISA, Indirect ELISA,
Sample test

Species Specificity:

human

Background Information

Storage

Storage:

Store at -80°C.

The product is shipped with ice packs. Upon receipt, store it immediately at -80°C

Storage Buffer:

PBS Only

For technical support and original validation data for this product please contact:

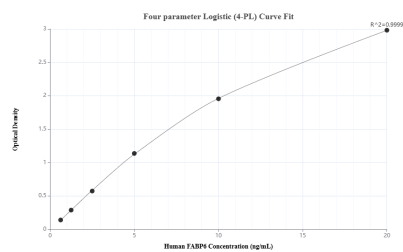
T: 4006900926

E: Proteintech-CN@ptglab.com

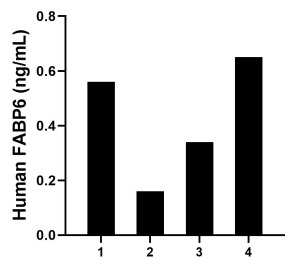
W: ptgcn.com

This product is exclusively available under Proteintech Group brand and is not available to purchase from any other manufacturer.

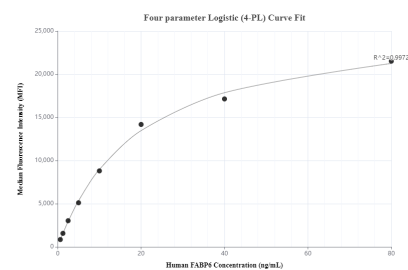
Selected Validation Data



Sandwich ELISA standard curve of MP01052-2, Human FABP6 Recombinant Matched Antibody Pair - PBS only. 84132-1-PBS was coated to a plate as the capture antibody and incubated with serial dilutions of standard Ag4788. 84132-2-PBS was HRP conjugated as the detection antibody. Range: 0.625-20 ng/mL



Serum of four individual healthy human donors was measured. The human FABP6 concentration of detected samples was determined to be 0.43 ng/mL with a range of 0.16 - 0.65 ng/mL



Cytometric bead array standard curve of MP01052-1, FABP6 Recombinant Matched Antibody Pair, PBS Only. Capture antibody: 84132-2-PBS. Detection antibody: 84132-1-PBS. Standard: Ag4788. Range: 0.625-80 ng/mL