

For Research Use Only

# EIF3F Recombinant antibody, PBS Only (Capture/Detector)

Catalog Number: 84131-2-PBS



## Basic Information

Catalog Number: 84131-2-PBS	GenBank Accession Number: BC000490	Purification Method: Protein A purification
Size: 1 mg/ml	GeneID (NCBI): 8665	CloneNo.: 240894D2
Source: Rabbit	UNIPROT ID: O00303	
Isotype: IgG	Full Name: eukaryotic translation initiation factor 3, subunit F	
Immunogen Catalog Number: AG34849	Calculated MW: 38 kDa	
	Observed MW: 40-45 kDa	

## Applications

**Tested Applications:**  
WB, IF/ICC, FC (Intra), Cytometric bead array,  
Sandwich ELISA, Indirect ELISA, Sample test

**Species Specificity:**  
human

## Background Information

EIF3F (eukaryotic translation initiation factor 3 subunit F) is a protein that plays an important role in eukaryotic cells and is an integral part of the translation initiation factor 3(Eif3) complex. EIF3 is a complex of at least 10 distinct subunits and is the largest translation initiation factor in eukaryotes.

## Storage

**Storage:**  
Store at -80°C.  
**The product is shipped with ice packs. Upon receipt, store it immediately at -80°C**

**Storage Buffer:**  
PBS Only

For technical support and original validation data for this product please contact:

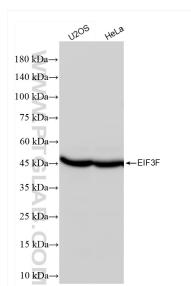
T: 4006900926

E: Proteintech-CN@ptglab.com

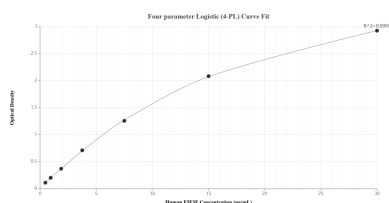
W: ptgcn.com

**This product is exclusively available under Proteintech Group brand and is not available to purchase from any other manufacturer.**

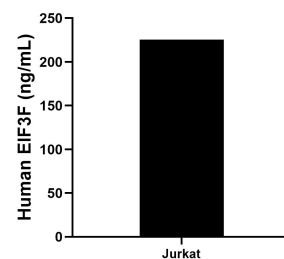
## Selected Validation Data



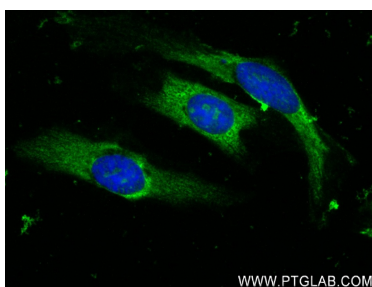
Various lysates were subjected to SDS PAGE followed by western blot with 84131-2-RR (EIF3F antibody) at dilution of 1:10000 incubated at room temperature for 1.5 hours. This data was developed using the same antibody clone with 84131-2-PBS in a different storage buffer formulation.



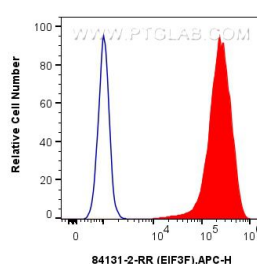
Sandwich ELISA standard curve of MP01038-4, Human EIF3F Recombinant Matched Antibody Pair - PBS only. 84131-1-PBS was coated to a plate as the capture antibody and incubated with serial dilutions of standard Ag34849. 84131-2-PBS was HRP conjugated as the detection antibody. Range: 0.469-30 ng/mL.



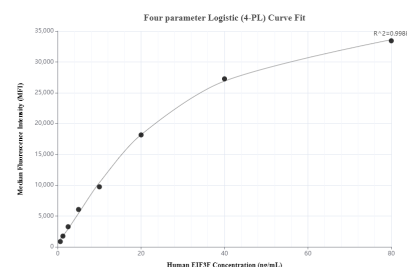
The mean EIF3F concentration was determined to be 225.37 ng/mL in Jurkat cell extract based on a 1.60 mg/mL extract load.



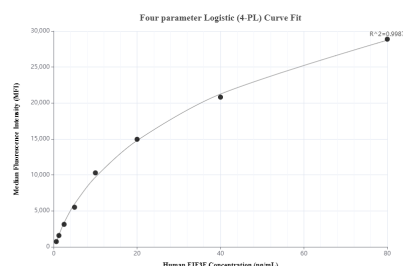
Immunofluorescent analysis of (-20°C Ethanol) fixed HeLa cells using EIF3F antibody (84131-2-RR, Clone: 240894D2) at dilution of 1:250 and CoraLite®488-Conjugated Goat Anti-Rabbit IgG(H+L) (SA00013-2). This data was developed using the same antibody clone with 84131-2-PBS in a different storage buffer formulation.



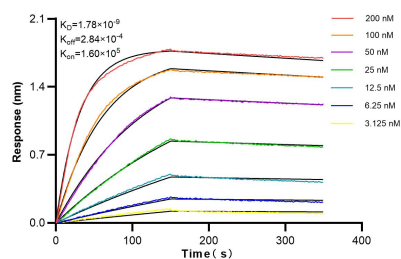
1x10<sup>6</sup> HeLa cells were intracellularly stained with 0.25 ug EIF3F Recombinant antibody (84131-2-RR, Clone:240894D2) and APC-Conjugated Goat Anti-Rabbit IgG(H+L)(red), or 0.25 ug Isotype Control (blue). Cells were fixed with 4% PFA and permeabilized with Flow Cytometry Perm Buffer (PF00011-C). This data was developed using the same antibody clone with 84131-2-PBS in a different storage buffer formulation.



Cytometric bead array standard curve of MP01038-1, EIF3F Recombinant Matched Antibody Pair, PBS Only. Capture antibody: 84131-2-PBS. Detection antibody: 84131-1-PBS. Standard: Ag34849. Range: 0.625-80 ng/mL.



Cytometric bead array standard curve of MP01038-2, EIF3F Recombinant Matched Antibody Pair, PBS Only. Capture antibody: 84131-2-PBS. Detection antibody: 84131-3-PBS. Standard: Ag34849. Range: 0.625-80 ng/mL.



Biolayer interferometry (BLI) kinetic assays of 84131-2-RR against Human EIF3F were performed. The affinity constant is 1.78 nM.