

For Research Use Only

# DPP10 Recombinant antibody, PBS Only (Capture/Detector)

Catalog Number: 84127-3-PBS



## Basic Information

Catalog Number:

84127-3-PBS

Size:

1 mg/ml

Source:

Rabbit

Isotype:

IgG

Immunogen Catalog Number:

AG3231

GenBank Accession Number:

BC030832

GeneID (NCBI):

57628

UNIPROT ID:

Q8N608

Full Name:

dipeptidyl-peptidase 10

Calculated MW:

796 aa, 91 kDa

Purification Method:

Protein A purification

CloneNo.:

241446G10

## Applications

Tested Applications:

Cytometric bead array, Sandwich ELISA, Indirect ELISA,  
Sample test

Species Specificity:

human

## Background Information

### Storage

Storage:

Store at -80°C.

**The product is shipped with ice packs. Upon receipt, store it immediately at -80°C**

Storage Buffer:

PBS Only

For technical support and original validation data for this product please contact:

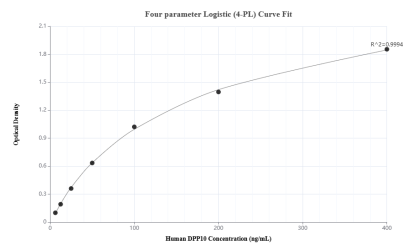
T: 4006900926

E: Proteintech-CN@ptglab.com

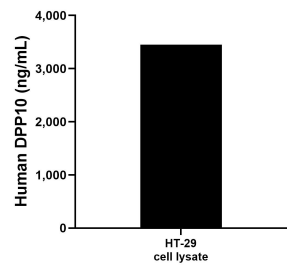
W: ptgcn.com

**This product is exclusively available under Proteintech Group brand and is not available to purchase from any other manufacturer.**

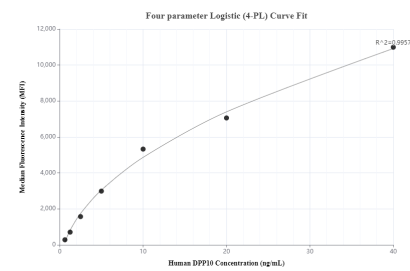
## Selected Validation Data



Sandwich ELISA standard curve of MP01035-3, Human DPP10 Recombinant Matched Antibody Pair - PBS only. 84127-2-PBS was coated to a plate as the capture antibody and incubated with serial dilutions of standard Ag3231. 84127-3-PBS was HRP conjugated as the detection antibody. Range: 6.25-400 ng/mL



HT-29 cell lysate was measured. The human DPP10 concentration of detected samples was determined to be 3,448.25 ng/mL (based on a 4.4 mg/mL extract load).



Cytometric bead array standard curve of MP01035-1, DPP10 Recombinant Matched Antibody Pair, PBS Only. Capture antibody: 84127-3-PBS. Detection antibody: 84127-2-PBS. Standard: Ag3231. Range: 0.625-40 ng/mL