

For Research Use Only

DPP10 Recombinant antibody, PBS Only (Capture/Detector)

Catalog Number: 84127-2-PBS



Basic Information

Catalog Number:

84127-2-PBS

Size:

1 mg/ml

Source:

Rabbit

Isotype:

IgG

Immunogen Catalog Number:

AG3231

GenBank Accession Number:

BC030832

GeneID (NCBI):

57628

UNIPROT ID:

Q8N608

Full Name:

dipeptidyl-peptidase 10

Calculated MW:

796 aa, 91 kDa

Observed MW:

91 kDa

Purification Method:

Protein A purification

CloneNo.:

241446A5

Applications

Tested Applications:

WB, IP, Cytometric bead array, Sandwich ELISA,
Indirect ELISA, Sample test

Species Specificity:

human, mouse, rat, pig

Background Information

DPP10 is a single-pass type II membrane protein that is a member of the S9B family in clan SC of the serine proteases. DPP10 is an inactive peptidase that modulates the electrophysiological properties, cell-surface expression and subcellular localization of voltage-gated potassium channels.

Storage

Storage:

Store at -80°C.

The product is shipped with ice packs. Upon receipt, store it immediately at -80°C

Storage Buffer:

PBS Only

For technical support and original validation data for this product please contact:

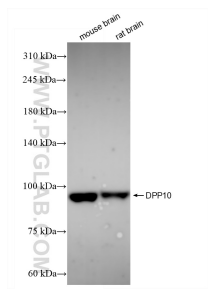
T: 4006900926

E: Proteintech-CN@ptglab.com

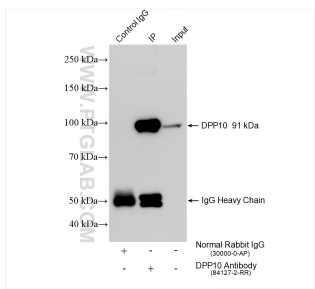
W: ptgcn.com

This product is exclusively available under Proteintech Group brand and is not available to purchase from any other manufacturer.

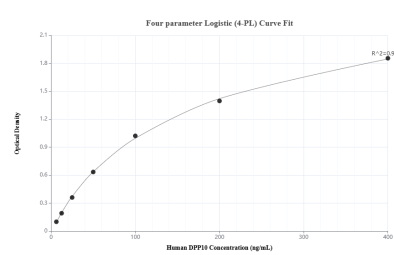
Selected Validation Data



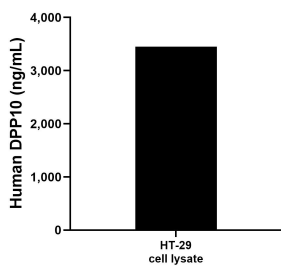
Various lysates were subjected to SDS PAGE followed by western blot with 84127-2-RR (DPP10 antibody) at dilution of 1:10000 incubated at room temperature for 1.5 hours. This data was developed using the same antibody clone with 84127-2-PBS in a different storage buffer formulation.



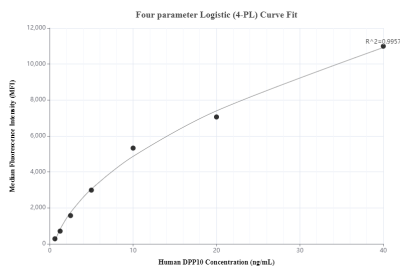
IP result of anti-DPP10 (IP:84127-2-RR, 4ug; Detection:84127-2-RR 1:1000) with pig brain tissue lysate 1240 ug. This data was developed using the same antibody clone with 84127-2-PBS in a different storage buffer formulation.



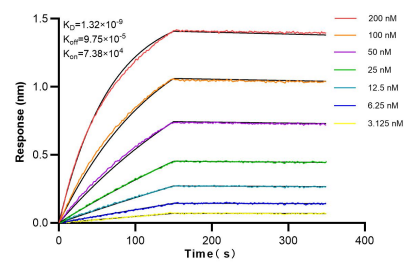
Sandwich ELISA standard curve of MP01035-3, Human DPP10 Recombinant Matched Antibody Pair - PBS only. 84127-2-PBS was coated to a plate as the capture antibody and incubated with serial dilutions of standard Ag3231. 84127-3-PBS was HRP conjugated as the detection antibody. Range: 6.25-400 ng/mL



HT-29 cell lysate was measured. The human DPP10 concentration of detected samples was determined to be 3,448.25 ng/mL (based on a 4.4 mg/mL extract load).



Cytometric bead array standard curve of MP01035-1, DPP10 Recombinant Matched Antibody Pair, PBS Only. Capture antibody: 84127-3-PBS. Detection antibody: 84127-2-PBS. Standard: Ag3231. Range: 0.625-40 ng/mL



Bi-layer interferometry (BLI) kinetic assays of 84127-2-RR against Human DPP10 were performed. The affinity constant is 1.32 nM.