

For Research Use Only

# SCF Recombinant monoclonal antibody, PBS Only (Detector)

Catalog Number: 84118-8-PBS



## Basic Information

Catalog Number:

84118-8-PBS

Concentration:

1 mg/ml

Source:

Rabbit

Isotype:

IgG

Immunogen Catalog Number:

HZ-1024

GenBank Accession Number:

GeneID (NCBI):

4254

UNIPROT ID:

P21583

Full Name:

KIT ligand

Purification Method:

Protein A purification

CloneNo.:

250446B11

## Applications

Tested Applications:

Sandwich ELISA, Indirect ELISA

Species Specificity:

human

## Background Information

### Storage

Storage:

Store at -80°C.

The product is shipped with ice packs. Upon receipt, store it immediately at -80°C

Storage Buffer:

PBS only, pH7.3

For technical support and original validation data for this product please contact:

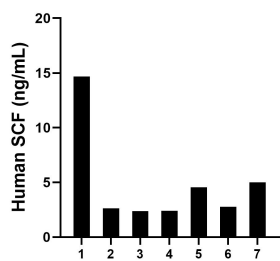
T: 4006900926

E: [Proteintech-CN@ptglab.com](mailto:Proteintech-CN@ptglab.com)

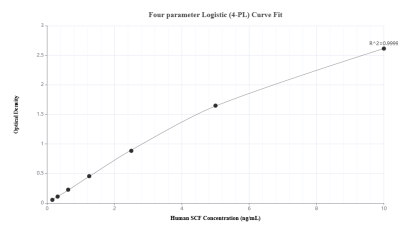
W: [ptgcn.com](http://ptgcn.com)

This product is exclusively available under Proteintech Group brand and is not available to purchase from any other manufacturer.

## Selected Validation Data



Plasma of seven individual healthy human donors was measured. The human SCF concentration of detected samples was determined to be 4.91 ng/mL with a range of 2.40 - 14.68 ng/mL.



Sandwich ELISA standard curve of MP01028-4, Human SCF Recombinant Matched Antibody Pair - PBS only. 84118-9-PBS was coated to a plate as the capture antibody and incubated with serial dilutions of standard HZ-1024. 84118-8-PBS was HRP conjugated as the detection antibody. Range: 0.156-10 ng/mL