

For Research Use Only

PPID Recombinant antibody, PBS Only (Detector)

Catalog Number: 84115-2-PBS



Basic Information

Catalog Number:

84115-2-PBS

Concentration:

1 mg/ml

Source:

Rabbit

Isotype:

IgG

Immunogen Catalog Number:

AG3409

GenBank Accession Number:

BC030707

GeneID (NCBI):

5481

UNIPROT ID:

Q08752

Full Name:

peptidylprolyl isomerase D

Calculated MW:

370 aa, 41 kDa

Purification Method:

Protein A purification

CloneNo.:

241361B5

Applications

Tested Applications:

Cytometric bead array, Sandwich ELISA, Indirect ELISA, Sample test

Species Specificity:

human

Background Information

Storage

Storage:

Store at -80°C.

The product is shipped with ice packs. Upon receipt, store it immediately at -80°C

Storage Buffer:

PBS only, pH7.3

For technical support and original validation data for this product please contact:

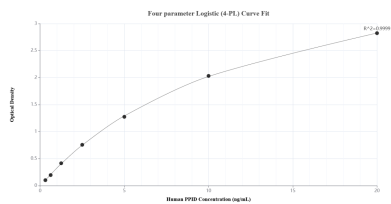
T: 4006900926

E: Proteintech-CN@ptglab.com

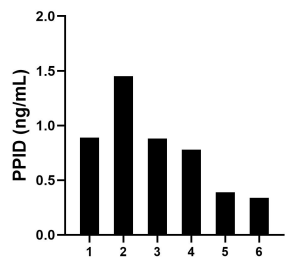
W: ptgcn.com

This product is exclusively available under Proteintech Group brand and is not available to purchase from any other manufacturer.

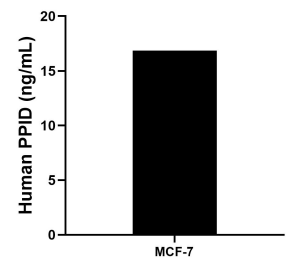
Selected Validation Data



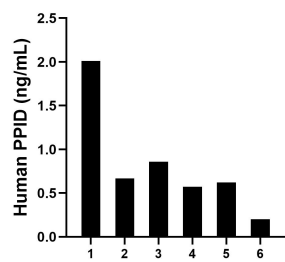
Sandwich ELISA standard curve of MP01018-4, Human PPID Recombinant Matched Antibody Pair - PBS only. 84115-7-PBS was coated to a plate as the capture antibody and incubated with serial dilutions of standard Ag3409. 84115-2-PBS was HRP conjugated as the detection antibody. Range: 0.313-20 ng/mL



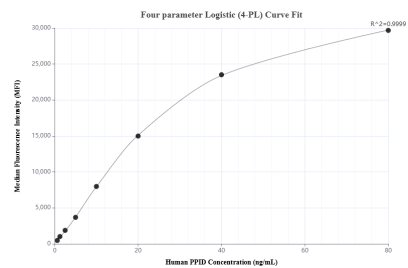
Serum of six rats was measured. The PPID concentration of detected samples was determined to be 0.79 ng/mL with a range of 0.34-1.45 ng/mL



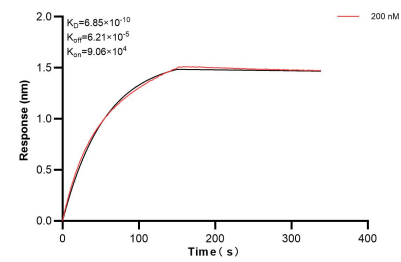
The mean PPID concentration was determined to be 16.84 ng/mL in MCF-7 cell extract based on a 1.20 mg/mL extract load.



Serum of six individual healthy human donors was measured. The PPID concentration of detected samples was determined to be 0.82 ng/mL with a range of 0.20-2.01 ng/mL



Cytometric bead array standard curve of MP01018-2, PPID Recombinant Matched Antibody Pair, PBS Only. Capture antibody: 84115-1-PBS. Detection antibody: 84115-2-PBS. Standard: Ag3409. Range: 0.625-80 ng/mL



Biolayer interferometry (BLI) kinetic assay of 84115-2-PBS against Human PPID was performed. The affinity constant is 0.685 nM.