

For Research Use Only

Mouse E-Cadherin Recombinant antibody, PBS Only (Capture)

Catalog Number: 84111-1-PBS



Basic Information

Catalog Number:

84111-1-PBS

Concentration:

1 mg/ml

Source:

Rabbit

Isotype:

IgG

Immunogen Catalog Number:

EG0975

GenBank Accession Number:

NM_009864.3

GeneID (NCBI):

12550

UNIPROT ID:

P09803

Full Name:

cadherin 1

Calculated MW:

98kDa

Purification Method:

Protein A purification

CloneNo.:

241282A5

Applications

Tested Applications:

Cytometric bead array, Sandwich ELISA, Indirect ELISA, Sample test

Species Specificity:

mouse

Background Information

Storage

Storage:

Store at -80°C.

The product is shipped with ice packs. Upon receipt, store it immediately at -80°C

Storage Buffer:

PBS only, pH7.3

For technical support and original validation data for this product please contact:

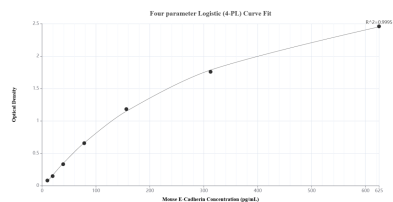
T: 4006900926

E: Proteintech-CN@ptglab.com

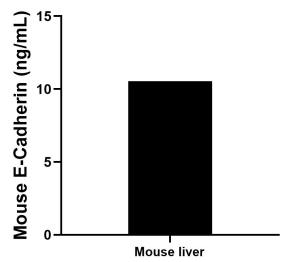
W: ptgcn.com

This product is exclusively available under Proteintech Group brand and is not available to purchase from any other manufacturer.

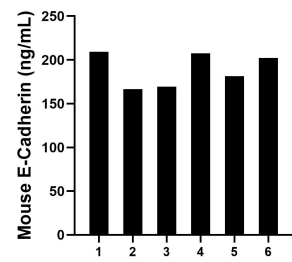
Selected Validation Data



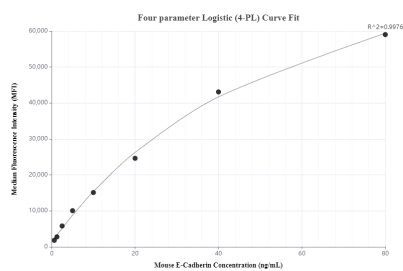
Sandwich ELISA standard curve of MP01047-2, Mouse E-Cadherin Recombinant Matched Antibody Pair - PBS only. 84111-1-PBS was coated to a plate as the capture antibody and incubated with serial dilutions of standard Eg0975. 84111-2-PBS was HRP conjugated as the detection antibody. Range: 9.77-625 pg/mL



The mean E-Cadherin concentration was determined to be 10.6 ng/mL in mouse liver tissue extract based on a 5.0 mg/mL extract load.



Serum of six mice was measured. The E-Cadherin concentration of detected samples was determined to be 189.4 ng/mL with a range of 166.7-209.1 ng/mL



Cytometric bead array standard curve of MP01047-2, MOUSE E-Cadherin Recombinant Matched Antibody Pair, PBS Only. Capture antibody: 84111-1-PBS. Detection antibody: 84111-2-PBS. Standard: Eg0975. Range: 0.625-80 ng/mL