

For Research Use Only

# SAMD9L Recombinant antibody, PBS Only (Capture/Detector)

Catalog Number: 84109-5-PBS



## Basic Information

Catalog Number:

84109-5-PBS

Concentration:

1 mg/ml

Source:

Rabbit

Isotype:

IgG

Immunogen Catalog Number:

AG18541

GenBank Accession Number:

BC127118

GeneID (NCBI):

219285

UNIPROT ID:

Q8IVG5

Full Name:

sterile alpha motif domain containing  
9-like

Calculated MW:

1584 aa, 185 kDa

Purification Method:

Protein A purification

CloneNo.:

241250H6

## Applications

Tested Applications:

Cytometric bead array, Sandwich ELISA, Indirect ELISA,  
Sample test

Species Specificity:

human

## Background Information

### Storage

Storage:

Store at -80°C.

**The product is shipped with ice packs. Upon receipt, store it immediately at -80°C**

Storage Buffer:

PBS Only

For technical support and original validation data for this product please contact:

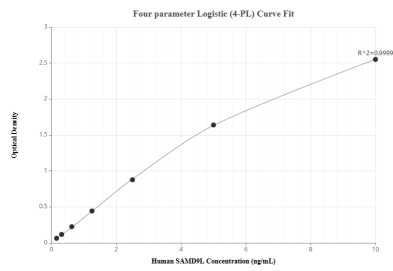
T: 4006900926

E: [Proteintech-CN@ptglab.com](mailto:Proteintech-CN@ptglab.com)

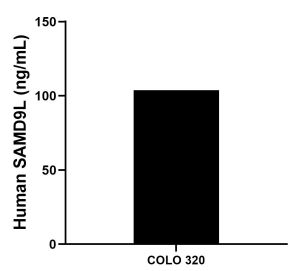
W: [ptgcn.com](http://ptgcn.com)

**This product is exclusively available under Proteintech Group brand and is not available to purchase from any other manufacturer.**

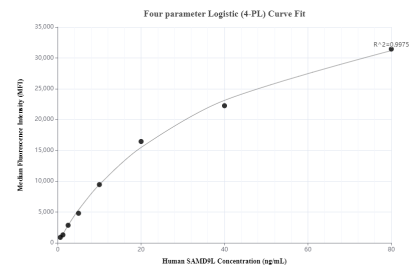
## Selected Validation Data



Sandwich ELISA standard curve of MP01024-4, Human SAMD9L Recombinant Matched Antibody Pair - PBS only. 84109-5-PBS was coated to a plate as the capture antibody and incubated with serial dilutions of standard Ag18541. 84109-2-PBS was HRP conjugated as the detection antibody. Range: 0.156-10 ng/mL



The mean SAMD9L concentration was determined to be 103.86 ng/mL in COLO 320 cell extract based on a 2.0 mg/mL extract load.



Cytometric bead array standard curve of MP01024-3, SAMD9L Recombinant Matched Antibody Pair, PBS Only. Capture antibody: 84109-3-PBS. Detection antibody: 84109-5-PBS. Standard: Ag18541. Range: 0.625-80 ng/mL