

For Research Use Only

# CD2 Recombinant antibody, PBS Only (Detector)

Catalog Number: 84108-3-PBS



## Basic Information

Catalog Number:	84108-3-PBS	GenBank Accession Number:	BC033583	Purification Method:	Protein A purification
Concentration:	1 mg/ml	GeneID (NCBI):	914	CloneNo.:	241222E10
Source:	Rabbit	ENSEMBL Gene ID:	ENSG00000116824		
Isotype:	IgG	UNIPROT ID:	P06729		
Immunogen Catalog Number:	EG1271	Full Name:	CD2 molecule		
		Calculated MW:	351 aa, 39 kDa		

## Applications

**Tested Applications:**  
IF/ICC, Sandwich ELISA, Indirect ELISA, Sample test

**Species Specificity:**  
human

## Background Information

CD2 is a cell surface glycoprotein present on a majority of thymocytes, all mature T cells and subset of NK cells but not on B lymphocytes. It is a pan T-cell marker. CD2 interacts with lymphocyte function-associated antigen (LFA-3/CD58) and CD48/BCM1 to mediate adhesion between T-cells and other cell types. CD2 is implicated in the triggering of T-cells, the cytoplasmic domain is implicated in the signaling function.

## Storage

**Storage:**  
Store at -80°C.  
**The product is shipped with ice packs. Upon receipt, store it immediately at -80°C**

**Storage Buffer:**  
PBS only, pH7.3

For technical support and original validation data for this product please contact:

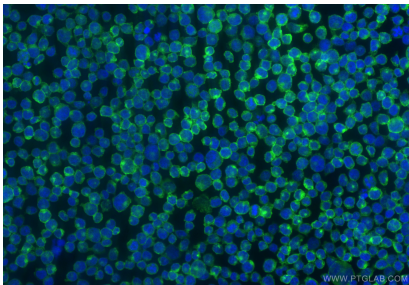
T: 4006900926

E: Proteintech-CN@ptglab.com

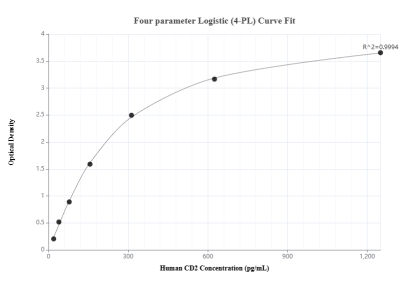
W: ptgcn.com

**This product is exclusively available under Proteintech Group brand and is not available to purchase from any other manufacturer.**

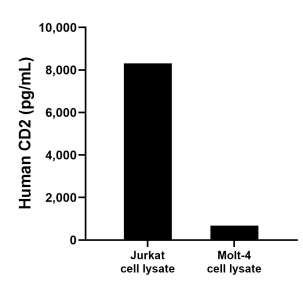
Selected Validation Data



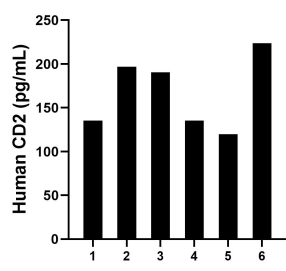
Immunofluorescent analysis of (4% PFA) fixed Jurkat cells using CD2 antibody (84108-3-RR, Clone: 241222E10 ) at dilution of 1:500 and CoraLite®488-Conjugated Goat Anti-Rabbit IgG(H+L) (SA00013-2). This data was developed using the same antibody clone with 84108-3-PBS in a different storage buffer formulation.



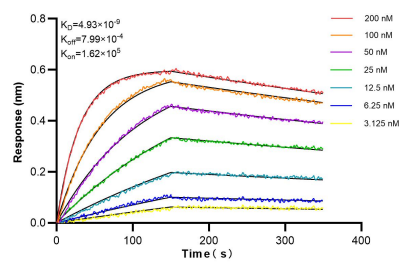
Sandwich ELISA standard curve of MP01045-4, Human CD2 Recombinant Matched Antibody Pair - PBS only. 84108-5-PBS was coated to a plate as the capture antibody and incubated with serial dilutions of standard Eg1271. 84108-3-PBS was HRP conjugated as the detection antibody. Range: 19.5-1250 pg/mL



Jurkat and Molt-4 cell lysate were measured. The human CD2 concentration of detected samples was determined to be 8,318.1 pg/mL (based on a 1.0 mg/mL extract load) in Jurkat cell lysate and 679.3 pg/mL (based on a 4.5 mg/mL extract load) in Molt-4 cell lysate.



Serum of six individual healthy human donors was measured. The human CD2 concentration of detected samples was determined to be 167.0 pg/mL with a range of 119.9 - 223.9 pg/mL.



Biolayer interferometry (BLI) kinetic assays of 84108-3-RR against Human CD2 were performed. The affinity constant is 4.93 nM.