

For Research Use Only

# PROS1 Recombinant antibody

Catalog Number: 84107-2-RR

Featured Product



## Basic Information

Catalog Number:

84107-2-RR

Size:

1000 ug/ml

Source:

Rabbit

Isotype:

IgG

Immunogen Catalog Number:

AG10539

GenBank Accession Number:

BC015801

GeneID (NCBI):

5627

UNIPROT ID:

P07225

Full Name:

protein S (alpha)

Calculated MW:

75 kDa

Observed MW:

75 kDa

Purification Method:

Protein A purification

CloneNo.:

241241E5

Recommended Dilutions:

WB 1:5000-1:50000

IHC 1:200-1:800

IF/ICC 1:125-1:500

## Applications

Tested Applications:

WB, IHC, IF/ICC, FC (Intra), ELISA

Species Specificity:

human

**Note-IHC: suggested antigen retrieval with TE buffer pH 9.0; (\*) Alternatively, antigen retrieval may be performed with citrate buffer pH 6.0**

Positive Controls:

WB : DU 145 cells, PC-3 cells, HuH-7 cells

IHC : mouse brain tissue,

IF/ICC : HepG2 cells,

## Background Information

PROS1, also named as Vitamin K-dependent protein S, is a 676 amino acid protein, which contains 4 EGF-like domains, contains one Gla (gamma-carboxy-glutamate) domain and contains 2 laminin G-like domains. PROS1 as a secreted protein platelets alpha granules is expressed in plasma. PROS1 is a cofactor to activated protein C in the degradation of coagulation factors Va and VIIIa and helps to prevent coagulation and stimulating fibrinolysis.

## Storage

Storage:

Store at -20°C. Stable for one year after shipment.

Storage Buffer:

PBS with 0.02% sodium azide and 50% glycerol pH 7.3.

Aliquoting is unnecessary for -20°C storage

For technical support and original validation data for this product please contact:

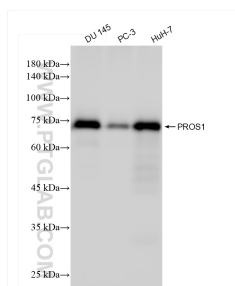
T: 4006900926

E: [Proteintech-CN@ptglab.com](mailto:Proteintech-CN@ptglab.com)

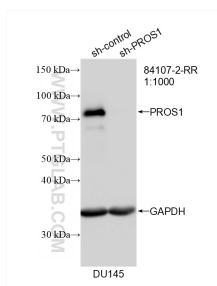
W: [ptgcn.com](http://ptgcn.com)

This product is exclusively available under Proteintech Group brand and is not available to purchase from any other manufacturer.

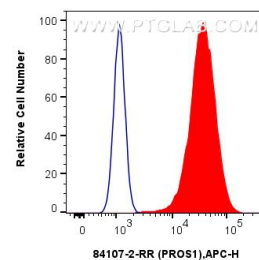
## Selected Validation Data



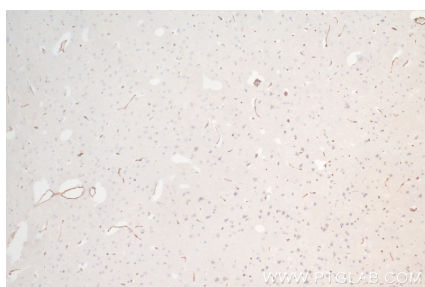
Various lysates were subjected to SDS PAGE followed by western blot with 84107-2-RR (PROS1 antibody) at dilution of 1:10000 incubated at room temperature for 1.5 hours.



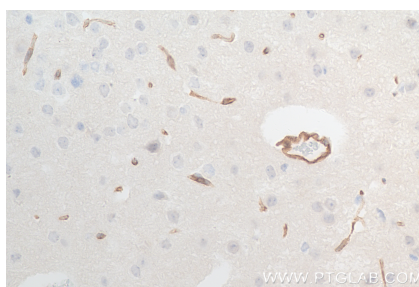
WB result of PROS1 antibody (84107-2-RR; 1:1000; incubated at room temperature for 1.5 hours) with sh-Control and sh-PROS1 transfected DU 145 cells.



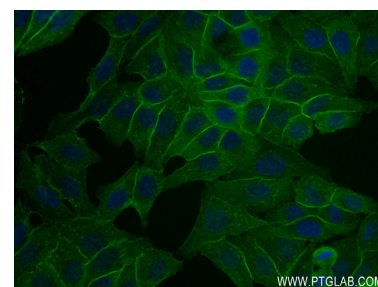
$1 \times 10^6$  A549 cells were intracellularly stained with 0.25  $\mu$ g PROS1 Recombinant antibody (84107-2-RR, Clone:241241E5) and APC-Conjugated Goat Anti-Rabbit IgG(H+L)(red), or 0.25  $\mu$ g Isotype Control (blue). Cells were fixed with 4% PFA and permeabilized with Flow Cytometry Perm Buffer (PF00011-C).



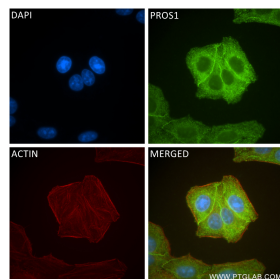
Immunohistochemical analysis of paraffin-embedded mouse brain tissue slide using 84107-2-RR (PROS1 antibody) at dilution of 1:400 (under 10x lens). Heat mediated antigen retrieval with Tris-EDTA buffer (pH 9.0).



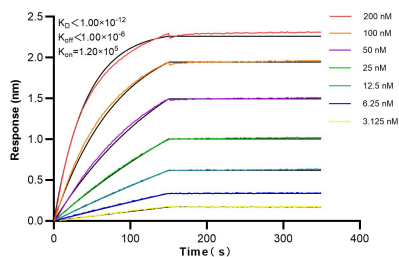
Immunohistochemical analysis of paraffin-embedded mouse brain tissue slide using 84107-2-RR (PROS1 antibody) at dilution of 1:400 (under 40x lens). Heat mediated antigen retrieval with Tris-EDTA buffer (pH 9.0).



Immunofluorescent analysis of (4% PFA) fixed HepG2 cells using PROS1 antibody (84107-2-RR, Clone: 241241E5) at dilution of 1:250 and CoraLite@488-Conjugated Goat Anti-Rabbit IgG(H+L) (SA00013-2).



Immunofluorescent analysis of (-20°C Ethanol) fixed HepG2 cells using PROS1 antibody (84107-2-RR, Clone: 241241E5) at dilution of 1:400 and CoraLite@488-Conjugated Goat Anti-Rabbit IgG(H+L) (SA00013-2), CL594-Phalloidin (red).



Biolayer interferometry (BLI) kinetic assays of 84107-2-RR against Human PROS1 were performed. The affinity constant is below 1 pM.