

For Research Use Only

# PROS1 Recombinant antibody, PBS Only (Capture)

Catalog Number: 84107-2-PBS

Featured Product



## Basic Information

Catalog Number:

84107-2-PBS

Size:

1 mg/ml

Source:

Rabbit

Isotype:

IgG

Immunogen Catalog Number:

AG10539

GenBank Accession Number:

BC015801

GeneID (NCBI):

5627

UNIPROT ID:

P07225

Full Name:

protein S (alpha)

Calculated MW:

75 kDa

Observed MW:

75 kDa

Purification Method:

Protein A purification

CloneNo.:

241241E5

## Applications

Tested Applications:

WB, IHC, IF/ICC, FC (Intra), Cytometric bead array, Sandwich ELISA, Indirect ELISA, Sample test

Species Specificity:

human

## Background Information

PROS1, also named as Vitamin K-dependent protein S, is a 676 amino acid protein, which contains 4 EGF-like domains, contains one Gla (gamma-carboxy-glutamate) domain and contains 2 laminin G-like domains. PROS1 as a secreted protein platelets alpha granules is expressed in plasma. PROS1 is a cofactor to activated protein C in the degradation of coagulation factors Va and VIIIa and helps to prevent coagulation and stimulating fibrinolysis.

## Storage

Storage:

Store at -80°C.

**The product is shipped with ice packs. Upon receipt, store it immediately at -80°C**

Storage Buffer:

PBS Only

For technical support and original validation data for this product please contact:

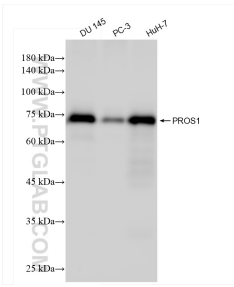
T: 4006900926

E: Proteintech-CN@ptglab.com

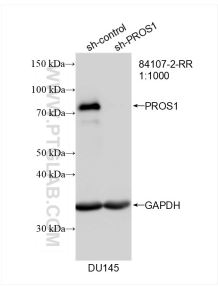
W: ptgcn.com

**This product is exclusively available under Proteintech Group brand and is not available to purchase from any other manufacturer.**

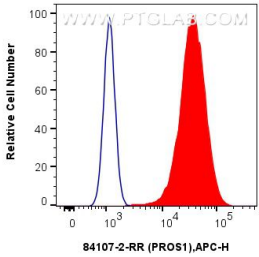
Selected Validation Data



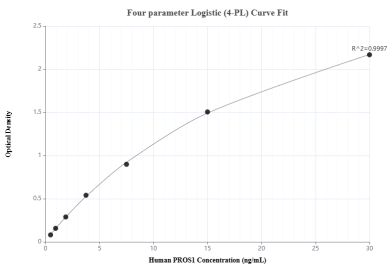
Various lysates were subjected to SDS PAGE followed by western blot with 84107-2-RR (PROS1 antibody) at dilution of 1:10000 incubated at room temperature for 1.5 hours. This data was developed using the same antibody clone with 84107-2-PBS in a different storage buffer formulation.



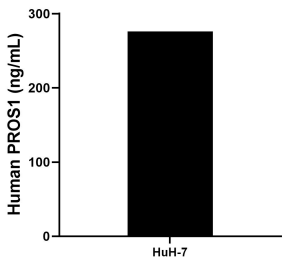
WB result of PROS1 antibody (84107-2-RR; 1:1000; incubated at room temperature for 1.5 hours) with sh-Control and sh-PROS1 transfected DU 145 cells. This data was developed using the same antibody clone with 84107-2-PBS in a different storage buffer formulation.



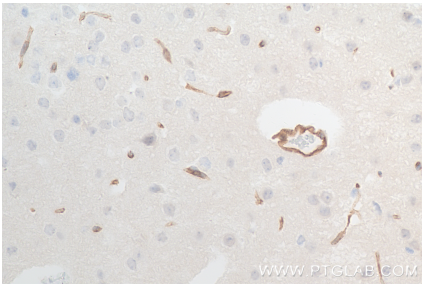
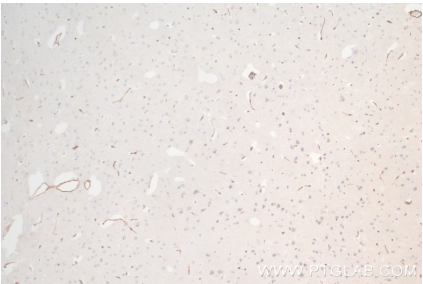
1x10<sup>6</sup> A549 cells were intracellularly stained with 0.25 ug PROS1 Recombinant antibody (84107-2-RR, Clone:241241E5) and APC-Conjugated Goat Anti-Rabbit IgG(H+L)(red), or 0.25 ug Isotype Control (blue). Cells were fixed with 4% PFA and permeabilized with Flow Cytometry Perm Buffer (PF00011-C). This data was developed using the same antibody clone with 84107-2-PBS in a different storage buffer formulation.



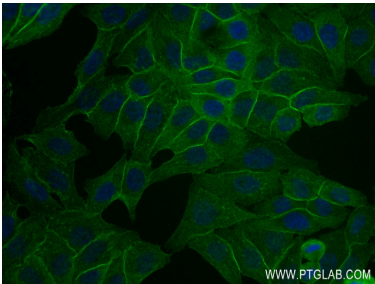
Sandwich ELISA standard curve of MP01044-1, Human PROS1 Recombinant Matched Antibody Pair - PBS only. 84107-2-PBS was coated to a plate as the capture antibody and incubated with serial dilutions of standard Ag10539. 84107-1-PBS was HRP conjugated as the detection antibody. Range: 0.469-30 ng/mL



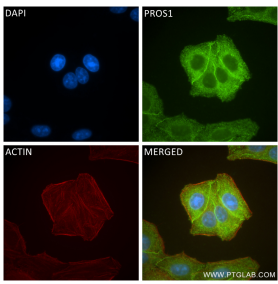
The mean PROS1 concentration was determined to be 276.09 ng/mL in Huh-7 cell extract based on a 1.4 mg/mL extract load.



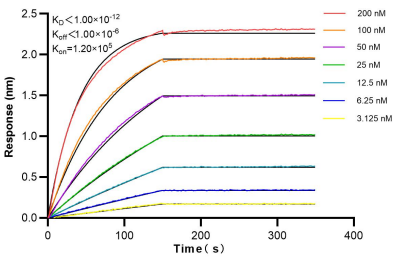
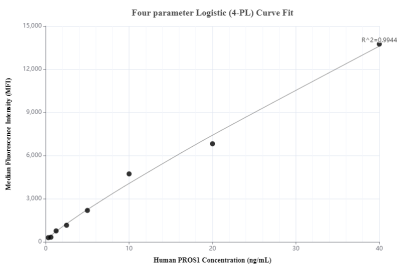
Immunohistochemical analysis of paraffin-embedded mouse brain tissue slide using 84107-2-RR (PROS1 antibody) at dilution of 1:400 (under 40x lens). Heat mediated antigen retrieval with Tris-EDTA buffer (pH 9.0). This data was developed using the same antibody clone with 84107-2-PBS in a different storage buffer formulation.



Immunofluorescent analysis of (4% PFA) fixed HepG2 cells using PROS1 antibody (84107-2-RR, Clone: 241241E5 ) at dilution of 1:250 and Coralite®488-Conjugated Goat Anti-Rabbit IgG(H+L) (SA00013-2). This data was developed using the same antibody clone with 84107-2-PBS in a different storage buffer formulation.



Immunofluorescent analysis of (-20°C Ethanol) fixed HepG2 cells using PROS1 antibody (84107-2-RR, Clone: 241241E5 ) at dilution of 1:400 and Coralite®488-Conjugated Goat Anti-Rabbit IgG(H+L) (SA00013-2), CL594-Phalloidin (red). This data was developed using the same antibody clone with 84107-2-PBS in a different storage buffer formulation.



Cytometric bead array standard curve of MP01044-1, PROS1 Recombinant Matched Antibody Pair, PBS Only. Capture antibody: 84107-2-PBS. Detection antibody: 84107-1-PBS. Standard: Ag10539. Range: 0.313-40 ng/mL.

Biolayer interferometry (BLI) kinetic assays of 84107-2-RR against Human PROS1 were performed. The affinity constant is below 1 pM.