

For Research Use Only

Complement factor B Recombinant antibody

Catalog Number: 84101-5-RR



Basic Information

| | | | | | |
|---------------------------|------------|---------------------------|---------------------|------------------------|------------------------|
| Catalog Number: | 84101-5-RR | GenBank Accession Number: | BC007990 | Purification Method: | Protein A purification |
| Concentration: | 1000 µg/ml | GeneID (NCBI): | 629 | CloneNo.: | 241141A8 |
| Source: | Rabbit | UNIPROT ID: | P00751 | Recommended Dilutions: | WB 1:2000-1:10000 |
| Isotype: | IgG | Full Name: | complement factor B | IHC 1:200-1:800 | IF/ICC 1:200-1:500 |
| Immunogen Catalog Number: | AG0226 | Calculated MW: | 86 kDa | | |
| | | Observed MW: | 93-100 kDa | | |

Applications

Tested Applications:
WB, IHC, IF/ICC, ELISA

Species Specificity:
human, mouse, rat

Note-IHC: suggested antigen retrieval with TE buffer pH 9.0; (*) Alternatively, antigen retrieval may be performed with citrate buffer pH 6.0

Positive Controls:

WB: mouse serum, rat serum, rat plasma, human plasma

IHC: mouse liver tissue,

IF/ICC: HepG2 cells,

Background Information

Complement factor B (CFB) is a component of the alternative pathway of complement activation. Complement factor B is a 93-100 kDa glycoprotein and is cleaved into Ba (33 kDa) and Bb (60 kDa) by factor D in the presence of C3b (PMID: 11025450). The active subunit Bb is a serine protease that is associated with C3b and forms the alternative pathway for C3 convertase. Bb is involved in the proliferation of preactivated B lymphocytes, while Ba inhibits their proliferation.

Storage

Storage:

Store at -20°C. Stable for one year after shipment.

Storage Buffer:

PBS with 0.02% sodium azide and 50% glycerol pH 7.3.

Aliquoting is unnecessary for -20°C storage

For technical support and original validation data for this product please contact:

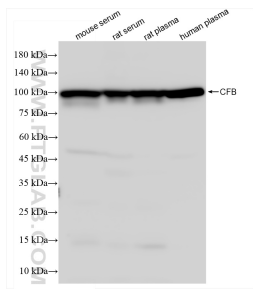
T: 4006900926

E: Proteintech-CN@ptglab.com

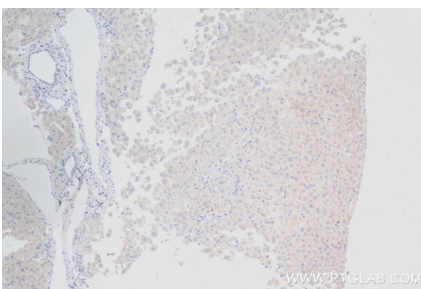
W: ptgcn.com

This product is exclusively available under Proteintech Group brand and is not available to purchase from any other manufacturer.

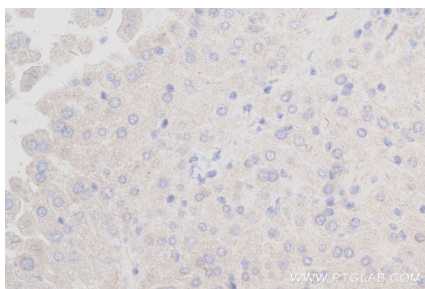
Selected Validation Data



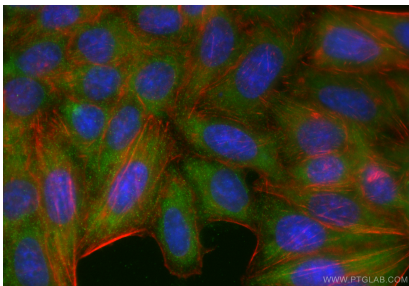
Various lysates were subjected to SDS PAGE followed by western blot with 84101-5-RR (Complement factor B antibody) at dilution of 1:5000 incubated at room temperature for 1.5 hours.



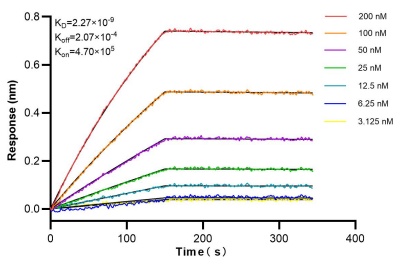
Immunohistochemical analysis of paraffin-embedded mouse liver tissue slide using 84101-5-RR (Complement factor B antibody) at dilution of 1:400 (under 10x lens). Heat mediated antigen retrieval with Tris-EDTA buffer (pH 9.0).



Immunohistochemical analysis of paraffin-embedded mouse liver tissue slide using 84101-5-RR (Complement factor B antibody) at dilution of 1:400 (under 40x lens). Heat mediated antigen retrieval with Tris-EDTA buffer (pH 9.0).



Immunofluorescent analysis of (-20°C Ethanol) fixed HepG2 cells using Complement factor B antibody (84101-5-RR, Clone: 241141A8) at dilution of 1:500 and Coralite® 488-Conjugated Goat Anti-Rabbit IgG(H+L) (SA00013-2), CL594-phalloidin (red).



Biolayer interferometry (BLI) kinetic assays of 84101-5-RR against Human Complement factor B were performed. The affinity constant is 2.27 nM.