

For Research Use Only

PTX3 Recombinant antibody, PBS Only (Capture/Detector)

Catalog Number: 84096-2-PBS



Basic Information

Catalog Number:

84096-2-PBS

Concentration:

1 mg/ml

Source:

Rabbit

Isotype:

IgG

GenBank Accession Number:

NM_002852.4

GeneID (NCBI):

5806

UNIPROT ID:

P26022

Full Name:

pentraxin-related gene, rapidly induced by IL-1 beta

Calculated MW:

42 kDa

Purification Method:

Protein A purification

CloneNo.:

241393C10

Applications

Tested Applications:

Cytometric bead array, Sandwich ELISA, Indirect ELISA, Sample test

Species Specificity:

human

Background Information

Storage

Storage:

Store at -80°C.

The product is shipped with ice packs. Upon receipt, store it immediately at -80°C

Storage Buffer:

PBS only

For technical support and original validation data for this product please contact:

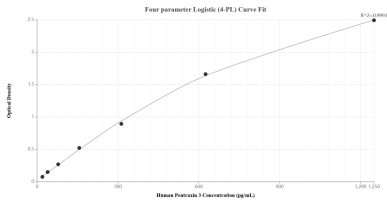
T: 4006900926

E: Proteintech-CN@ptglab.com

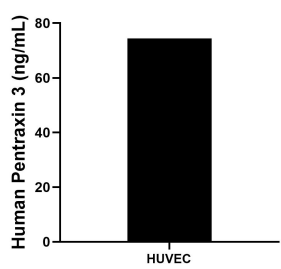
W: ptgcn.com

This product is exclusively available under Proteintech Group brand and is not available to purchase from any other manufacturer.

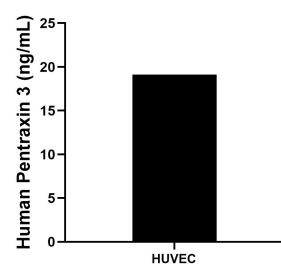
Selected Validation Data



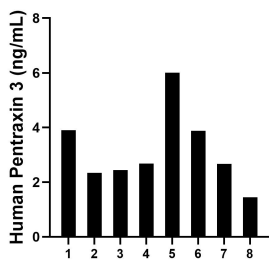
Sandwich ELISA standard curve of MP01014-4, Human Pentraxin 3 Recombinant Matched Antibody Pair - PBS only. 84096-2-PBS was coated to a plate as the capture antibody and incubated with serial dilutions of standard Eg1303. 84096-4-PBS was HRP conjugated as the detection antibody. Range: 19.5-1250 pg/mL



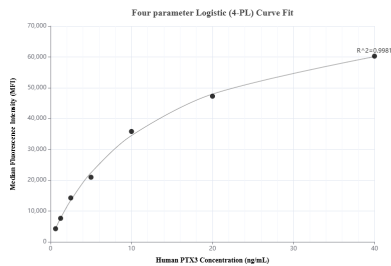
HUVEC were cultured in DMEM supplemented with 10% fetal bovine serum, 2.5 mM L-glutamine, 100 U/mL penicillin, and 100 µg/mL streptomycin sulfate. An aliquot of the cell culture supernate was removed, assayed for human Pentraxin 3, and measured 74.4 ng/mL



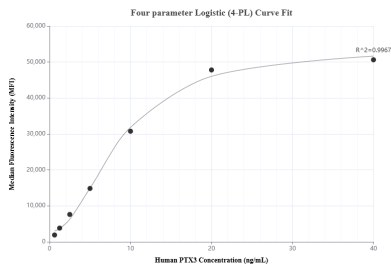
The mean Pentraxin 3 concentration was determined to be 19.1 ng/mL in HUVEC cell extract based on a 1.1 mg/mL extract load.



Serum of eight individual healthy human donors was measured. The Pentraxin 3 concentration of detected samples was determined to be 3.2 ng/mL with a range of 1.5-6.0 ng/mL



Cytometric bead array standard curve of MP01014-1, Pentraxin 3 Recombinant Matched Antibody Pair, PBS Only. Capture antibody: 84096-4-PBS. Detection antibody: 84096-2-PBS. Standard: Eg1303. Range: 0.625-40 ng/mL



Cytometric bead array standard curve of MP01014-2, Pentraxin 3 Recombinant Matched Antibody Pair, PBS Only. Capture antibody: 84096-2-PBS. Detection antibody: 84096-1-PBS. Standard: Eg1303. Range: 0.625-40 ng/mL