

For Research Use Only

Mouse IGFBP2 Recombinant monoclonal antibody, PBS Only

Catalog Number: 84092-3-PBS



Basic Information

Catalog Number:

84092-3-PBS

Source:

Rabbit

Isotype:

IgG

GenBank Accession Number:

NM_008342.3

GeneID (NCBI):

16008

UNIPROT ID:

P47877

Full Name:

insulin-like growth factor binding protein 2

Calculated MW:

33kDa

Purification Method:

Protein A purification

CloneNo.:

241363D8

Applications

Tested Applications:

IF/ICC, Indirect ELISA

Species Specificity:

mouse

Background Information

IGFBP2 is a key member of the IGFBP family that is highly expressed in embryonic and fetal tissues and decreases significantly after birth. IGFBP2 mediates IGF-independent tumorigenesis by participating in intracellular and nuclear regulatory networks and may serve as an excellent prognostic biomarker in various cancers (PMID: 35546443).

Storage

Storage:

Store at -80°C.

The product is shipped with ice packs. Upon receipt, store it immediately at -80°C

Storage Buffer:

PBS only, pH7.3

For technical support and original validation data for this product please contact:

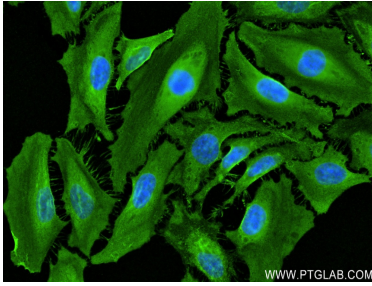
T: 4006900926

E: Proteintech-CN@ptglab.com

W: ptgcn.com

This product is exclusively available under Proteintech Group brand and is not available to purchase from any other manufacturer.

Selected Validation Data



Immunofluorescent analysis of (4% PFA) fixed HeLa cells using IGFBP2 antibody (84092-3-RR, Clone: 241363D8) at dilution of 1:250 and CoraLite®488-Conjugated Goat Anti-Rabbit IgG(H+L) (SA00013-2). This data was developed using the same antibody clone with 84092-3-PBS in a different storage buffer formulation.