

For Research Use Only

IGFBP2 Recombinant antibody

Catalog Number: 84092-1-RR



Basic Information

Catalog Number:

84092-1-RR

Concentration:

1000 µg/ml

Source:

Rabbit

Isotype:

IgG

GenBank Accession Number:

NM_008342.3

GeneID (NCBI):

16008

UNIPROT ID:

P47877

Full Name:

insulin-like growth factor binding protein 2

Calculated MW:

33kDa

Observed MW:

33-35 kDa

Purification Method:

Protein A purification

CloneNo.:

241363D12

Recommended Dilutions:

WB 1:1000-1:4000

Applications

Tested Applications:

WB, ELISA

Species Specificity:

human, mouse

Positive Controls:

WB : T-47D cells, mouse serum

Background Information

IGFBP2 is a key member of the IGFBP family that is highly expressed in embryonic and fetal tissues and decreases significantly after birth. IGFBP2 mediates IGF-independent tumorigenesis by participating in intracellular and nuclear regulatory networks and may serve as an excellent prognostic biomarker in various cancers (PMID: 35546443).

Storage

Storage:

Store at -20°C. Stable for one year after shipment.

Storage Buffer:

PBS with 0.02% sodium azide and 50% glycerol pH 7.3.

Aliquoting is unnecessary for -20°C storage

For technical support and original validation data for this product please contact:

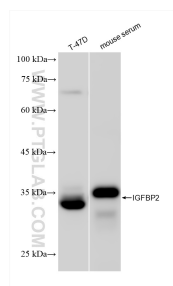
T: 4006900926

E: Proteintech-CN@ptglab.com

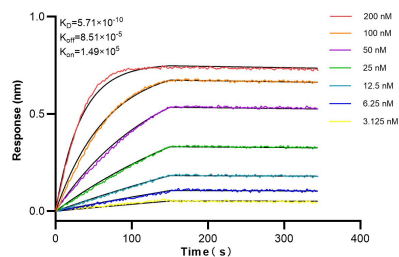
W: ptgcn.com

This product is exclusively available under Proteintech Group brand and is not available to purchase from any other manufacturer.

Selected Validation Data



Various lysates were subjected to SDS PAGE followed by western blot with 84092-1-RR (IGFBP2 antibody) at dilution of 1:2000 incubated at room temperature for 1.5 hours.



Biolayer interferometry (BLI) kinetic assays of 84092-1-RR against Mouse IGFBP2 were performed. The affinity constant is 0.571 nM.