

For Research Use Only

PCDH21 Recombinant antibody, PBS Only (Capture)

Catalog Number: 84084-3-PBS



Basic Information

Catalog Number: 84084-3-PBS	GenBank Accession Number: BC038799	Purification Method: Protein A purification
Concentration: 1 mg/ml	GeneID (NCBI): 92211	CloneNo.: 241134E10
Source: Rabbit	UNIPROT ID: Q96JP9	
Isotype: IgG	Full Name: protocadherin 21	
Immunogen Catalog Number: AG11451	Calculated MW: 745 aa, 82 kDa	
	Observed MW: 120 kDa	

Applications

Tested Applications:
WB, Cytometric bead array, Indirect ELISA

Species Specificity:
human

Background Information

Protocadherins, which constitute the largest subgroup within the cadherin superfamily, are predominantly expressed in the nervous system and are probably involved in the regulation of neuronal recognition and connectivity (PMID: 17936607; 12231349; 17133224). PCDH21 (protocadherin 21), also known as CDHR1, is a photoreceptor-specific cadherin protein containing six ECs and an intracellular domain. The mutations of PCDH21 cause recessive retinal degeneration and autosomal recessive cone-rod dystrophy in humans (PMID: 16288196; PMID: 20805371). The full length of the PCDH21 protein is 120 kDa, the N-terminal soluble fragment is 95 kDa, and the C-terminal fragment is 25 kDa (PMID: 35066146; PMID: 18654668; PMID: 33964272).

Storage

Storage:
Store at -80°C.
The product is shipped with ice packs. Upon receipt, store it immediately at -80°C

Storage Buffer:
PBS Only

For technical support and original validation data for this product please contact:

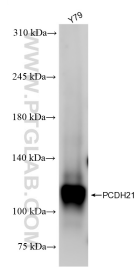
T: 4006900926

E: Proteintech-CN@ptglab.com

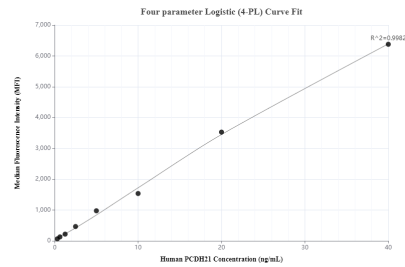
W: ptgcn.com

This product is exclusively available under Proteintech Group brand and is not available to purchase from any other manufacturer.

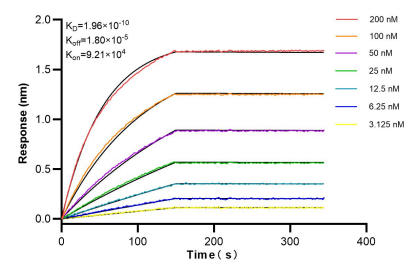
Selected Validation Data



Y79 cells were subjected to SDS PAGE followed by western blot with 84084-3-RR (PCDH21 antibody) at dilution of 1:2000 incubated at room temperature for 1.5 hours. This data was developed using the same antibody clone with 84084-3-PBS in a different storage buffer formulation.



Cytometric bead array standard curve of MP00999-2, PCDH21 Recombinant Matched Antibody Pair, PBS Only. Capture antibody: 84084-3-PBS. Detection antibody: 84084-2-PBS. Standard: Ag11451. Range: 0.313-40 ng/mL.



Biolayer interferometry (BLI) kinetic assays of 84084-3-RR against Human PCDH21 were performed. The affinity constant is 0.196 nM.