

For Research Use Only

# VGLUT2 Recombinant antibody

Catalog Number: 84083-2-RR



## Basic Information

Catalog Number:

84083-2-RR

Concentration:

1000 ug/ml

Source:

Rabbit

Isotype:

IgG

Immunogen Catalog Number:

AG29565

GenBank Accession Number:

NM\_020346

GeneID (NCBI):

57084

UNIPROT ID:

Q9P2U8

Full Name:

solute carrier family 17 (sodium-dependent inorganic phosphate cotransporter), member 6

Calculated MW:

64 kDa

Observed MW:

60 kDa

Purification Method:

Protein A purification

CloneNo.:

241255B5

Recommended Dilutions:

WB 1:5000-1:50000

IF-Fro 1:200-1:800

## Applications

Tested Applications:

WB, IF-Fro, ELISA

Species Specificity:

human, mouse

Positive Controls:

WB : unboiled mouse brain tissue,

IF-Fro : mouse brain tissue,

## Background Information

VGLUT2, also known as SLC17A6, belongs to the major facilitator superfamily. VGLUT2 is a multifunctional transporter that transports phosphate at the plasma membrane and glutamate in synaptic vesicles (PMID:33440152, 11432869). VGLUT2 is involved in neurotransmitter loading into synaptic vesicles (PMID: 11698620). VGLUT2 is predominantly expressed in adult and fetal brain, with highest expression in the medulla, substantia nigra, subthalamic nucleus, and thalamus, and low levels in the cerebellum and hippocampus (PMID:10820226).

## Storage

Storage:

Store at -20°C. Stable for one year after shipment.

Storage Buffer:

PBS with 0.02% sodium azide and 50% glycerol pH 7.3.

Aliquoting is unnecessary for -20°C storage

For technical support and original validation data for this product please contact:

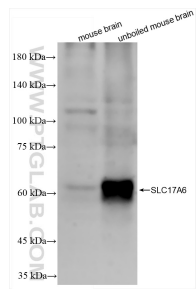
T: 4006900926

E: [Proteintech-CN@ptglab.com](mailto:Proteintech-CN@ptglab.com)

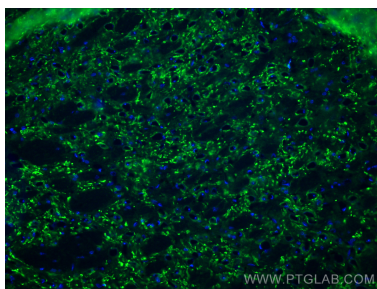
W: [ptgcn.com](http://ptgcn.com)

This product is exclusively available under Proteintech Group brand and is not available to purchase from any other manufacturer.

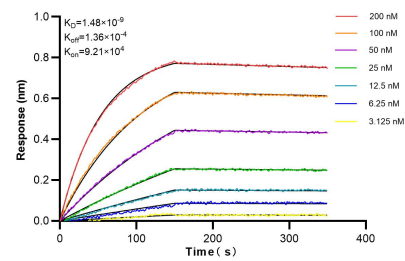
## Selected Validation Data



Various lysates were subjected to SDS PAGE followed by western blot with 84083-2-RR (VGLUT2 antibody) at dilution of 1:10000 incubated at room temperature for 1.5 hours.



Immunofluorescent analysis of (4% PFA) fixed frozen OCT-embedded mouse brain tissue using VGLUT2 antibody (84083-2-RR, Clone: 241255B5 ) at dilution of 1:400 and CoraLite®488-Conjugated Goat Anti-Rabbit IgG(H+L) (SA00013-2).



Biolayer interferometry (BLI) kinetic assays of 84083-2-RR against Human VGLUT2 were performed. The affinity constant is 1.48 nM.