

For Research Use Only

VGLUT2 Recombinant antibody, PBS Only (Detector)

Catalog Number: 84083-2-PBS



Basic Information

Catalog Number:

84083-2-PBS

Concentration:

1 mg/ml

Source:

Rabbit

Isotype:

IgG

Immunogen Catalog Number:

AG29565

GenBank Accession Number:

NM_020346

GeneID (NCBI):

57084

UNIPROT ID:

Q9P2U8

Full Name:

solute carrier family 17 (sodium-dependent inorganic phosphate cotransporter), member 6

Calculated MW:

64 kDa

Observed MW:

60 kDa

Purification Method:

Protein A purification

CloneNo.:

241255B5

Applications

Tested Applications:

WB, IF-Fro, Cytometric bead array, Indirect ELISA

Species Specificity:

human, mouse

Background Information

VGLUT2, also known as SLC17A6, belongs to the major facilitator superfamily. VGLUT2 is a multifunctional transporter that transports phosphate at the plasma membrane and glutamate in synaptic vesicles (PMID:33440152, 11432869). VGLUT2 is involved in neurotransmitter loading into synaptic vesicles (PMID: 11698620). VGLUT2 is predominantly expressed in adult and fetal brain, with highest expression in the medulla, substantia nigra, subthalamic nucleus, and thalamus, and low levels in the cerebellum and hippocampus (PMID:10820226).

Storage

Storage:

Store at -80°C.

The product is shipped with ice packs. Upon receipt, store it immediately at -80°C

Storage Buffer:

PBS Only

For technical support and original validation data for this product please contact:

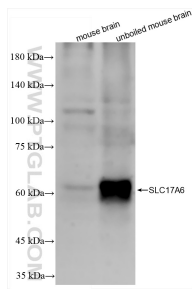
T: 4006900926

E: Proteintech-CN@ptglab.com

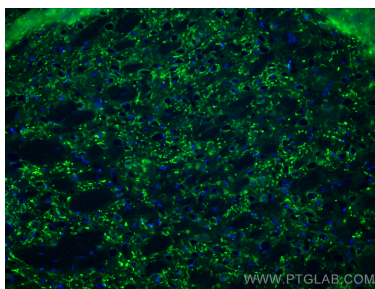
W: ptgcn.com

This product is exclusively available under Proteintech Group brand and is not available to purchase from any other manufacturer.

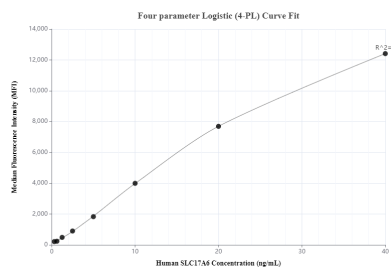
Selected Validation Data



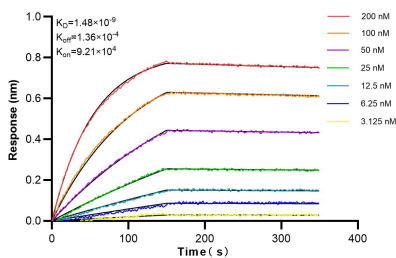
Various lysates were subjected to SDS PAGE followed by western blot with 84083-2-RR (VGLUT2 antibody) at dilution of 1:10000 incubated at room temperature for 1.5 hours. This data was developed using the same antibody clone with 84083-2-PBS in a different storage buffer formulation.



Immunofluorescent analysis of (4% PFA) fixed frozen OCT-embedded mouse brain tissue using VGLUT2 antibody (84083-2-RR, Clone: 241255B5) at dilution of 1:400 and CoraLite®488-Conjugated Goat Anti-Rabbit IgG(H+L) (SA00013-2). This data was developed using the same antibody clone with 84083-2-PBS in a different storage buffer formulation.



Cytometric bead array standard curve of MP00998-1, SLC17A6 Recombinant Matched Antibody Pair, PBS Only. Capture antibody: 84083-1-PBS. Detection antibody: 84083-2-PBS. Standard: Ag29565. Range: 0.313-40 ng/mL



Biolayer interferometry (BLI) kinetic assays of 84083-2-RR against Human VGLUT2 were performed. The affinity constant is 1.48 nM.