

For Research Use Only

# TRP1 Recombinant antibody, PBS Only (Detector)

Catalog Number: 84082-2-PBS



## Basic Information

Catalog Number: 84082-2-PBS	GenBank Accession Number: BC052608	Purification Method: Protein A purification
Concentration: 1 mg/ml	GeneID (NCBI): 7306	CloneNo.: 241242D7
Source: Rabbit	UNIPROT ID: P17643	
Isotype: IgG	Full Name: tyrosinase-related protein 1	
Immunogen Catalog Number: AG10166	Calculated MW: 537 aa, 61 kDa	

## Applications

**Tested Applications:**  
IHC, IF/ICC, Cytometric bead array, Sandwich ELISA,  
Indirect ELISA, Sample test

**Species Specificity:**  
human

## Background Information

### Storage

**Storage:**  
Store at -80°C.  
**The product is shipped with ice packs. Upon receipt, store it immediately at -80°C**

**Storage Buffer:**  
PBS Only

For technical support and original validation data for this product please contact:

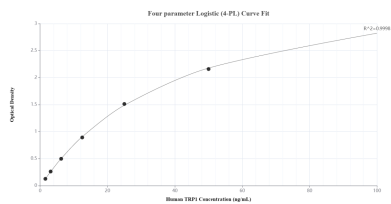
T: 4006900926

E: Proteintech-CN@ptglab.com

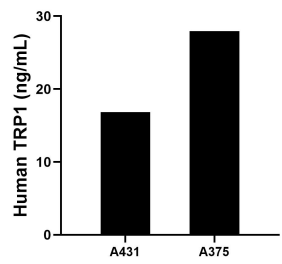
W: ptgcn.com

**This product is exclusively available under Proteintech Group brand and is not available to purchase from any other manufacturer.**

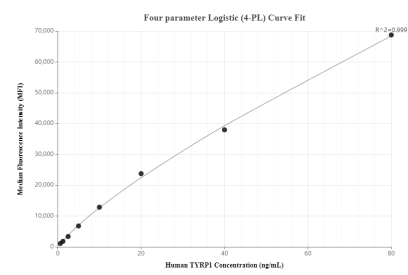
## Selected Validation Data



Sandwich ELISA standard curve of MP00997-3, Human TRP1 Recombinant Matched Antibody Pair - PBS only. 84082-4-PBS was coated to a plate as the capture antibody and incubated with serial dilutions of standard Ag10166. 84082-2-PBS was HRP conjugated as the detection antibody. Range: 1.56-100 ng/mL.



The mean TRP1 concentration was determined to be 16.83 ng/mL in A431 cell extract based on a 4.00 mg/mL extract load and 27.93 ng/mL in A375 cell extract based on a 4.60 mg/mL extract load.



Cytometric bead array standard curve of MP00997-1, TRP1/TYRP1 Recombinant Matched Antibody Pair, PBS Only. Capture antibody: 84082-1-PBS. Detection antibody: 84082-2-PBS. Standard: Ag10166. Range: 0.625-80 ng/mL.