

# PCF11 Recombinant antibody

Catalog Number: 84081-5-RR

## Basic Information

**Catalog Number:**

84081-5-RR

**Size:**

1000 µg/ml

**Source:**

Rabbit

**Isotype:**

IgG

**Immunogen Catalog Number:**

AG20263

**GenBank Accession Number:**

BC146778

**GeneID (NCBI):**

51585

**UNIPROT ID:**

O94913

**Full Name:**

PCF11, cleavage and polyadenylation factor subunit, homolog (S. cerevisiae)

**Calculated MW:**

1555 aa, 173 kDa

**Purification Method:**

Protein A purification

**CloneNo.:**

241213B12

**Recommended Dilutions:**

IF/ICC 1:125-1:500

## Applications

**Tested Applications:**

IF/ICC, FC (Intra), ELISA

**Species Specificity:**

human

**Positive Controls:**

IF/ICC : HeLa cells,

## Background Information

In *Saccharomyces cerevisiae*, the cleavage/polyadenylation factor Pcf11 is a crucial regulatory factor required for recruiting polyadenylation machinery to elongating RNA polymerase II (RNAPII), and is necessary for correct transcriptional termination. Pcf11 (PCF11, cleavage and polyadenylation factor subunit, homolog (*S. cerevisiae*)), is a 1,555 amino acid nuclear protein that is a component of pre-mRNA cleavage complex II. It is suggested that Pcf11 is capable of promoting the dissociation of Pol II elongation complexes from DNA. Pcf11 contains a CTD-interaction domain that binds in a phospho-dependent manner to the heptad repeats within the RNA polymerase II CTD. The gene encoding Pcf11 is located on human chromosome 11, which houses over 1,400 genes and comprises nearly 4% of the human genome. Jervell and Lange-Nielsen syndrome, Jacobsen syndrome, Niemann-Pick disease, hereditary angioedema and Smith-Lemli-Opitz syndrome are associated with defects in genes that map to chromosome 11.

## Storage

**Storage:**

Store at -20°C. Stable for one year after shipment.

**Storage Buffer:**

PBS with 0.02% sodium azide and 50% glycerol pH 7.3.

Aliquoting is unnecessary for -20°C storage

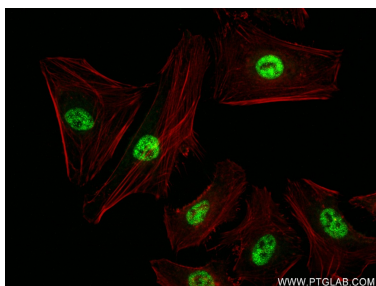
For technical support and original validation data for this product please contact:

T: 4006900926

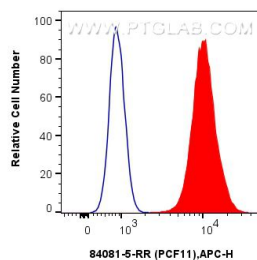
E: [Proteintech-CN@ptglab.com](mailto:Proteintech-CN@ptglab.com)W: [ptgcn.com](http://ptgcn.com)

This product is exclusively available under Proteintech Group brand and is not available to purchase from any other manufacturer.

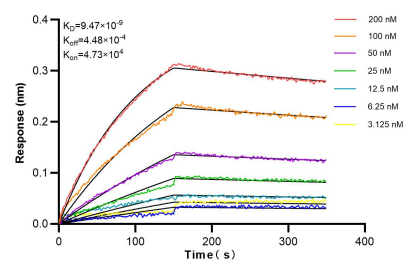
## Selected Validation Data



Immunofluorescent analysis of (4% PFA) fixed HeLa cells using PCF11 antibody (84081-5-RR, Clone: 241213B12 ) at dilution of 1:250 and CoraLite®488-Conjugated Goat Anti-Rabbit IgG(H+L) (SA00013-2), CL594-Phalloidin (red).



$1 \times 10^6$  U-2 OS were intracellularly stained with 0.25  $\mu$ g PCF11 Recombinant antibody (84081-5-RR, Clone:241213B12) and APC-Conjugated Goat Anti-Rabbit IgG(H+L)(red), or 0.25  $\mu$ g Isotype Control (blue). Cells were fixed and permeabilized with True-Nuclear Transcription Factor Buffer Set.



Biolayer interferometry (BLI) kinetic assays of 84081-5-RR against Human PCF11 were performed. The affinity constant is 9.47 nM.