

For Research Use Only

# SEMA3B Recombinant antibody, PBS Only

Catalog Number: 84080-3-PBS



## Basic Information

Catalog Number:

84080-3-PBS

Concentration:

1 mg/ml

Source:

Rabbit

Isotype:

IgG

Immunogen Catalog Number:

AG25163

GenBank Accession Number:

BC009113

GeneID (NCBI):

7869

UNIPROT ID:

Q13214

Full Name:

sema domain, immunoglobulin domain (Ig), short basic domain, secreted, (semaphorin) 3B

Observed MW:

83 kDa

Purification Method:

Protein A purification

CloneNo.:

241171A7

## Applications

Tested Applications:

WB, IF/ICC, Indirect ELISA

Species Specificity:

human

## Background Information

SEMA3B is a class 3 semaphorin/collapsin family member containing 749 highly conserved, NH2 terminal, semaphorin amino acids. SEMA3B is characterized as a strong suppressing factor of the proliferation of cancerous cells and also by its anti-angiogenic effect. SEMA3B has been found in lung cancer, ovarian cancer, hepatocellular carcinoma, and cholangiocarcinoma. SEMA3B is expressed abundantly but differentially in various neural and nonneural tissues. The calculated molecular weight of SEMA3B is 83 kDa (PMID: 30914894, PMID: 32410560).

## Storage

Storage:

Store at -80°C.

**The product is shipped with ice packs. Upon receipt, store it immediately at -80°C**

Storage Buffer:

PBS only, pH7.3

For technical support and original validation data for this product please contact:

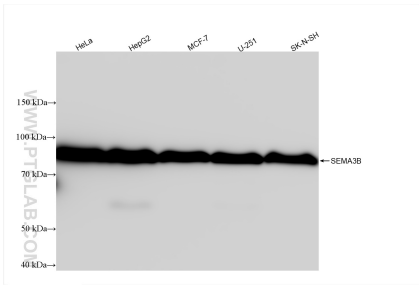
T: 4006900926

E: Proteintech-CN@ptglab.com

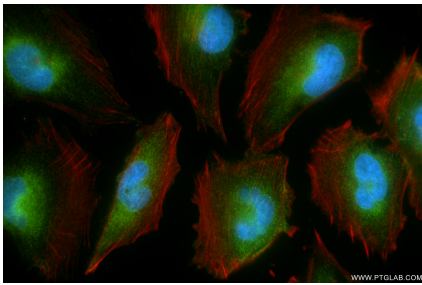
W: ptgcn.com

**This product is exclusively available under Proteintech Group brand and is not available to purchase from any other manufacturer.**

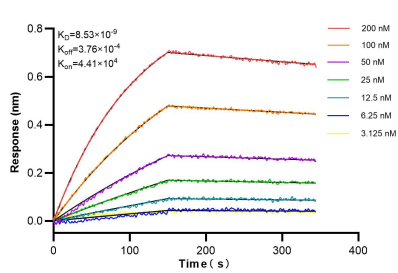
## Selected Validation Data



Various lysates were subjected to SDS PAGE followed by western blot with 84080-3-RR (SEMA3B antibody) at dilution of 1:2000 incubated at room temperature for 1.5 hours. This data was developed using the same antibody clone with 84080-3-PBS in a different storage buffer formulation.



Immunofluorescent analysis of (4% PFA) fixed U-251 cells using SEMA3B antibody (84080-3-RR, Clone: 241171A7) at dilution of 1:500 and CoraLite® 488-Conjugated Goat Anti-Rabbit IgG(H+L) (SA00013-2), CL594-Phalloidin (red). This data was developed using the same antibody clone with 84080-3-PBS in a different storage buffer formulation.



Biolayer interferometry (BLI) kinetic assays of 84080-3-RR against Human SEMA3B were performed. The affinity constant is 8.53 nM.