

For Research Use Only

CD36 Recombinant antibody, PBS Only (Capture/Detector)

Catalog Number: 84078-3-PBS



Basic Information

Catalog Number:

84078-3-PBS

Size:

1 mg/ml

Source:

Rabbit

Isotype:

IgG

GenBank Accession Number:

NM_001001548.3

GeneID (NCBI):

948

UNIPROT ID:

P16671-1

Full Name:

CD36 molecule (thrombospondin receptor)

Calculated MW:

53 kDa

Purification Method:

Protein A purification

CloneNo.:

241262F8

Applications

Tested Applications:

Cytometric bead array, Sandwich ELISA, Indirect ELISA, Sample test

Species Specificity:

human

Background Information

Storage

Storage:

Store at -80°C.

The product is shipped with ice packs. Upon receipt, store it immediately at -80°C

Storage Buffer:

PBS Only

For technical support and original validation data for this product please contact:

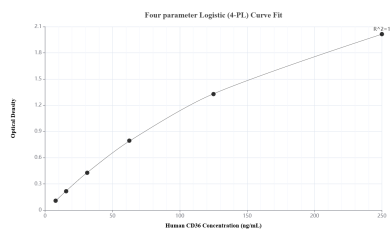
T: 4006900926

E: Proteintech-CN@ptglab.com

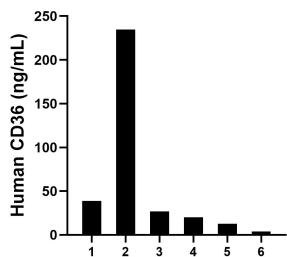
W: ptgcn.com

This product is exclusively available under Proteintech Group brand and is not available to purchase from any other manufacturer.

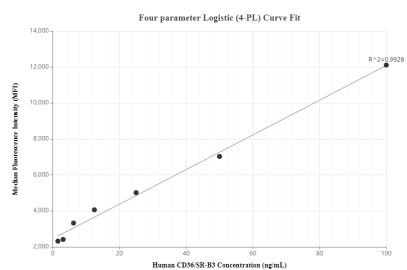
Selected Validation Data



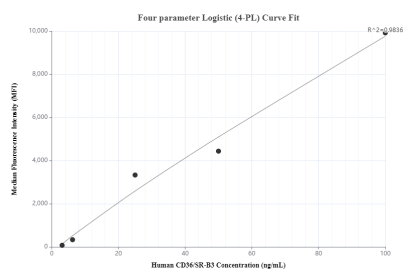
Sandwich ELISA standard curve of MP00992-4, Human CD36 Recombinant Matched Antibody Pair - PBS only. 84078-3-PBS was coated to a plate as the capture antibody and incubated with serial dilutions of standard Eg1070. 84078-5-PBS was HRP conjugated as the detection antibody. Range: 7.81-250 ng/mL.



Serum of six individual healthy human donors was measured. The CD36 concentration of detected samples was determined to be 80.10 ng/mL with a range of 3.74-234.72 ng/mL.



Cytometric bead array standard curve of MP00992-1, CD36 Recombinant Matched Antibody Pair, PBS Only. Capture antibody: 84078-3-PBS. Detection antibody: 84078-1-PBS. Standard: Eg1070. Range: 1.563-100 ng/mL.



Cytometric bead array standard curve of MP00992-2, CD36 Recombinant Matched Antibody Pair, PBS Only. Capture antibody: 84078-2-PBS. Detection antibody: 84078-3-PBS. Standard: Eg1070. Range: 3.125-100 ng/mL.