

## ISLR2 Recombinant antibody

Catalog Number: 84076-3-RR

## Basic Information

|   |   |  |
|---|---|--|
| <b>Catalog Number:</b><br>84076-3-RR        | <b>GenBank Accession Number:</b><br>BC152429  | <b>Purification Method:</b><br>Protein A purification                |
| <b>Concentration:</b><br>1000 µg/ml         | <b>GeneID (NCBI):</b><br>57611  | <b>CloneNo.:</b><br>241227D6   |
| <b>Source:</b><br>Rabbit                    | <b>UNIPROT ID:</b><br>Q6UXX2  | <b>Recommended Dilutions:</b><br>WB 1:2000-1:10000<br>IHC 1:50-1:500 |
| <b>Isotype:</b><br>IgG                      | <b>Full Name:</b><br>immunoglobulin superfamily<br>containing leucine-rich repeat 2 |  |
| <b>Immunogen Catalog Number:</b><br>AG20505 | <b>Calculated MW:</b><br>745 aa, 79 kDa<br><b>Observed MW:</b><br>79 kDa, 130 kDa   |  |

## Applications

|   |  |
|---|--|
| <b>Tested Applications:</b><br>WB, IHC, ELISA   | <b>Positive Controls:</b>                        |
| <b>Species Specificity:</b><br>human, mouse, rat  | <b>WB :</b> mouse brain tissue, rat brain tissue |
| <b>Note-IHC:</b> suggested antigen retrieval with <b>TE buffer pH 9.0; (*) Alternatively, antigen retrieval may be performed with citrate buffer pH 6.0</b> | <b>IHC :</b> mouse brain tissue,                 |

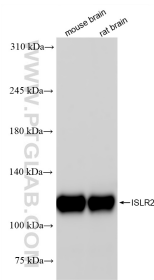
## Background Information

ISLR2 (immunoglobulin superfamily containing leucine rich repeat 2), also known as LINX. It is expected to be located in cell membrane and the protein is mainly expressed in brain and testis. While the first knockout mouse had impaired development of the internal capsule and no hydrocephalus, a much more recent independent knockout mouse was shown to additionally have severe hydrocephalus. Although the mechanism remains unclear, it may be related to the role of ISLR2 in reorganizing the cytoskeleton of developing neurons (PMID: 30483960). The calculated molecular weight of ISLR2 is 79 kDa, this target has phosphorylation modification and glycosylation modification. And the 130 kDa band is glycosylated (PMID: 29739947).

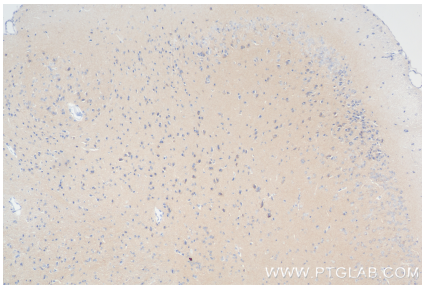
## Storage

**Storage:**  
Store at -20°C. Stable for one year after shipment.  
**Storage Buffer:**  
PBS with 0.02% sodium azide and 50% glycerol, pH7.3  
Aliquoting is unnecessary for -20°C storage

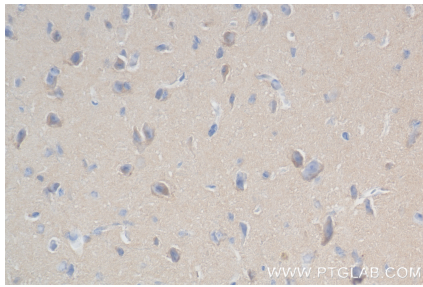
## Selected Validation Data



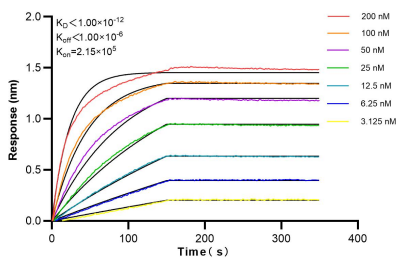
Various lysates were subjected to SDS PAGE followed by western blot with 84076-3-RR (ISLR2 antibody) at dilution of 1:5000 incubated at room temperature for 1.5 hours.



Immunohistochemical analysis of paraffin-embedded mouse brain tissue slide using 84076-3-RR (ISLR2 antibody) at dilution of 1:200 (under 10x lens). Heat mediated antigen retrieval with Tris-EDTA buffer (pH 9.0).



Immunohistochemical analysis of paraffin-embedded mouse brain tissue slide using 84076-3-RR (ISLR2 antibody) at dilution of 1:200 (under 40x lens). Heat mediated antigen retrieval with Tris-EDTA buffer (pH 9.0).



Biolayer interferometry (BLI) kinetic assays of 84076-3-RR against Human ISLR2 were performed. The affinity constant is below 1 pM.