

For Research Use Only

# ISLR2 Recombinant antibody, PBS Only

Catalog Number: 84076-3-PBS



## Basic Information

Catalog Number:

84076-3-PBS

Concentration:

1 mg/ml

Source:

Rabbit

Isotype:

IgG

Immunogen Catalog Number:

AG20505

GenBank Accession Number:

BC152429

GeneID (NCBI):

57611

UNIPROT ID:

Q6UXK2

Full Name:

immunoglobulin superfamily  
containing leucine-rich repeat 2

Calculated MW:

745 aa, 79 kDa

Observed MW:

79 kDa, 130 kDa

Purification Method:

Protein A purification

CloneNo.:

241227D6

## Applications

Tested Applications:

WB, IHC, Indirect ELISA

Species Specificity:

human, mouse, rat

## Background Information

ISLR2 (immunoglobulin superfamily containing leucine rich repeat 2), also known as LINX. It is expected to be located in cell membrane and the protein is mainly expressed in brain and testis. While the first knockout mouse had impaired development of the internal capsule and no hydrocephalus, a much more recent independent knockout mouse was shown to additionally have severe hydrocephalus. Although the mechanism remains unclear, it may be related to the role of ISLR2 in reorganizing the cytoskeleton of developing neurons (PMID: 30483960). The calculated molecular weight of ISLR2 is 79 kDa, this target has phosphorylation modification and glycosylation modification. And the 130 kDa band is glycosylated (PMID: 29739947).

## Storage

Storage:

Store at -80°C.

The product is shipped with ice packs. Upon receipt, store it immediately at -80°C

Storage Buffer:

PBS only, pH7.3

For technical support and original validation data for this product please contact:

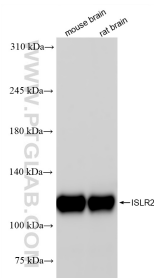
T: 4006900926

E: Proteintech-CN@ptglab.com

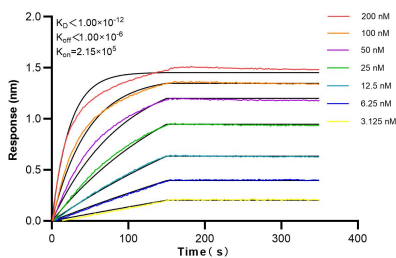
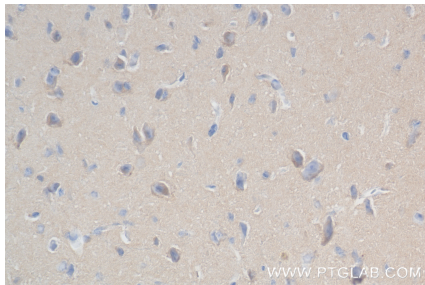
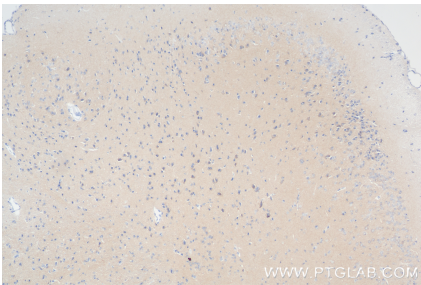
W: ptgcn.com

This product is exclusively available under Proteintech Group brand and is not available to purchase from any other manufacturer.

## Selected Validation Data



Various lysates were subjected to SDS PAGE followed by western blot with 84076-3-RR (ISLR2 antibody) at dilution of 1:5000 incubated at room temperature for 1.5 hours. This data was developed using the same antibody clone with 84076-3-PBS in a different storage buffer formulation.



Biolayer interferometry (BLI) kinetic assays of 84076-3-RR against Human ISLR2 were performed. The affinity constant is below 1 pM.