

For Research Use Only

NOTCH2 Recombinant antibody, PBS Only (Capture)

Catalog Number: 84074-3-PBS



Basic Information

Catalog Number:	GenBank Accession Number:	Purification Method:
84074-3-PBS	NM_024408	Protein A purification
Size:	GeneID (NCBI):	CloneNo.:
1 mg/ml	4853	241162F4
Source:	UNIPROT ID:	
Rabbit	Q04721	
Isotype:	Full Name:	
IgG	Notch homolog 2 (Drosophila)	
Immunogen Catalog Number:	Calculated MW:	
AG29413	265 kDa	

Applications

Tested Applications:
Cytometric bead array, Sandwich ELISA, Indirect ELISA, Sample test

Species Specificity:
human

Background Information

Storage

Storage:
Store at -80°C.
The product is shipped with ice packs. Upon receipt, store it immediately at -80°C

Storage Buffer:
PBS Only

For technical support and original validation data for this product please contact:

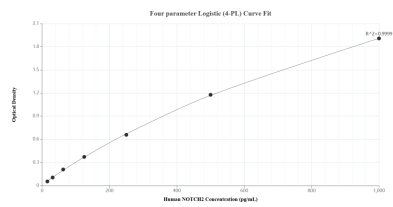
T: 4006900926

E: Proteintech-CN@ptglab.com

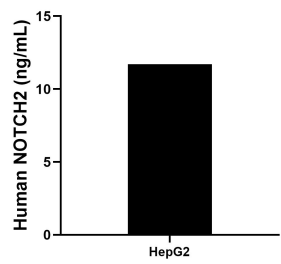
W: ptgcn.com

This product is exclusively available under Proteintech Group brand and is not available to purchase from any other manufacturer.

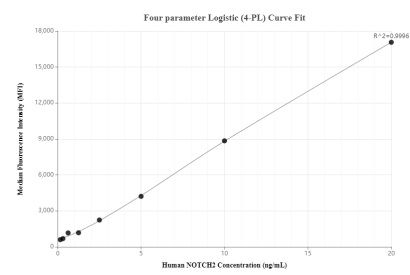
Selected Validation Data



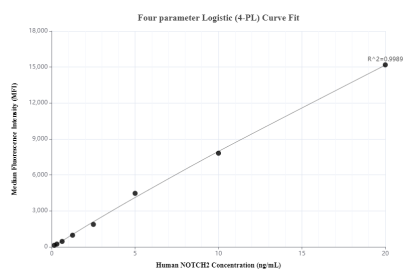
Sandwich ELISA standard curve of MP01016-2, Human NOTCH2 Recombinant Matched Antibody Pair - PBS only. 84074-3-PBS was coated to a plate as the capture antibody and incubated with serial dilutions of standard Ag29413. 84074-1-PBS was HRP conjugated as the detection antibody. Range: 15.6-1000 pg/mL.



The mean NOTCH2 concentration was determined to be 11.7 ng/mL in HepG2 cell extract based on a 1.0 mg/mL extract load.



Cytometric bead array standard curve of MP01016-1, NOTCH2 Recombinant Matched Antibody Pair, PBS Only. Capture antibody: 84074-3-PBS. Detection antibody: 84074-2-PBS. Standard: Ag29413. Range: 0.156-20 ng/mL.



Cytometric bead array standard curve of MP01016-2, NOTCH2 Recombinant Matched Antibody Pair, PBS Only. Capture antibody: 84074-3-PBS. Detection antibody: 84074-1-PBS. Standard: Ag29413. Range: 0.156-20 ng/mL.