

For Research Use Only

NOTCH2 Recombinant monoclonal antibody, PBS Only (Detector)

Catalog Number: 84074-1-PBS



Basic Information

Catalog Number: 84074-1-PBS	GenBank Accession Number: NM_024408	Purification Method: Protein A purification
Source: Rabbit	GeneID (NCBI): 4853	CloneNo.: 241162C7
Isotype: IgG	UNIPROT ID: Q04721	
Immunogen Catalog Number: AG29413	Full Name: Notch homolog 2 (Drosophila)	
	Calculated MW: 265 kDa	

Applications

Tested Applications:
Cytometric bead array, Sandwich ELISA, Indirect ELISA

Species Specificity:
human

Background Information

Storage

Storage:
Store at -80°C.
The product is shipped with ice packs. Upon receipt, store it immediately at -80°C

Storage Buffer:
PBS only, pH7.3

For technical support and original validation data for this product please contact:

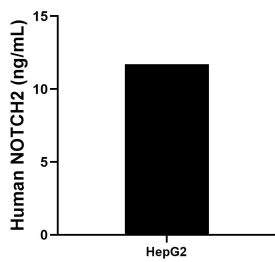
T: 4006900926

E: Proteintech-CN@ptglab.com

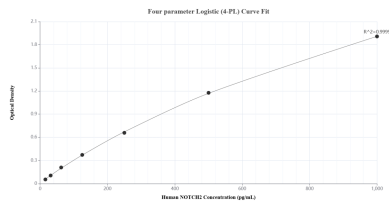
W: ptgcn.com

This product is exclusively available under Proteintech Group brand and is not available to purchase from any other manufacturer.

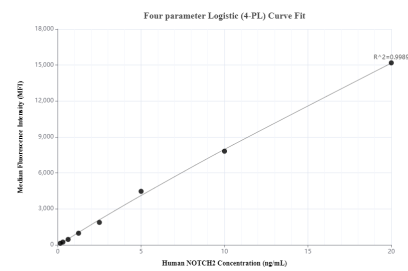
Selected Validation Data



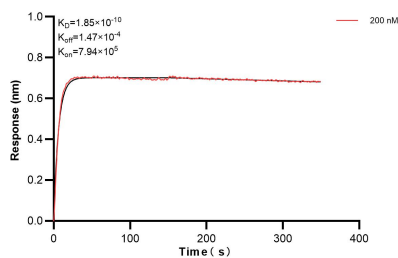
The mean NOTCH2 concentration was determined to be 11.7 ng/mL in HepG2 cell extract based on a 1.0 mg/mL extract load.



Sandwich ELISA standard curve of MP01016-2, Human NOTCH2 Recombinant Matched Antibody Pair - PBS only. 84074-3-PBS was coated to a plate as the capture antibody and incubated with serial dilutions of standard Ag29413. 84074-1-PBS was HRP conjugated as the detection antibody. Range: 15.6-1000 pg/mL.



Cytometric bead array standard curve of MP01016-2, NOTCH2 Recombinant Matched Antibody Pair, PBS Only. Capture antibody: 84074-3-PBS. Detection antibody: 84074-1-PBS. Standard: Ag29413. Range: 0.156-20 ng/mL.



Biolayer interferometry (BLI) kinetic assay of 84074-1-PBS against Human NOTCH2 was performed. The affinity constant is 1.85 nM.