

For Research Use Only

EPCAM/CD326 Recombinant antibody, PBS Only

Catalog Number: 84073-6-PBS



Basic Information

Catalog Number: 84073-6-PBS	GenBank Accession Number: NM_002354.3	Purification Method: Protein A purification
Concentration: 1 mg/ml	GeneID (NCBI): 4072	CloneNo.: 241243B10
Source: Rabbit	UNIPROT ID: P16422	
Isotype: IgG	Full Name: epithelial cell adhesion molecule	
Immunogen Catalog Number: EG1370	Calculated MW: 35 kDa	
	Observed MW: 35-40 kDa	

Applications

Tested Applications:
WB, IHC, IF/ICC, Indirect ELISA

Species Specificity:
human

Background Information

Epithelial cell adhesion molecule (EpCAM, CD326) is a type I transmembrane glycoprotein that functions as a homophilic, epithelial-specific intercellular cell-adhesion molecule. In addition to cell adhesion, EpCAM is also involved in cellular signaling, cell migration, proliferation, and differentiation. EpCAM is highly expressed on most carcinomas and therefore of potential use as a diagnostic and prognostic marker for a variety of carcinomas, and has become a therapeutic target. EpCAM may occur in distinct forms due to glycosylation. (PMID: 20837599; 19249674; 21576002; 22647938; 12691820)

Storage

Storage:
Store at -80°C.
The product is shipped with ice packs. Upon receipt, store it immediately at -80°C

Storage Buffer:
PBS only, pH7.3

For technical support and original validation data for this product please contact:

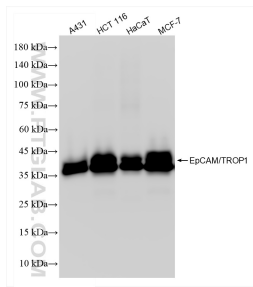
T: 4006900926

E: Proteintech-CN@ptglab.com

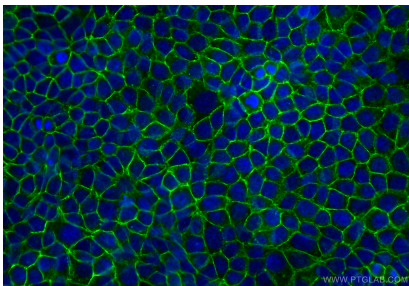
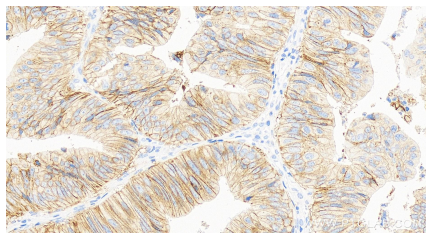
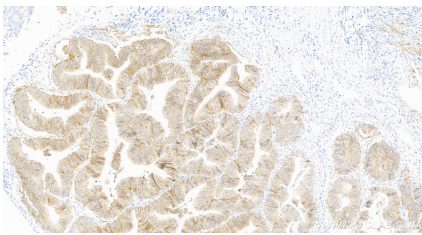
W: ptgcn.com

This product is exclusively available under Proteintech Group brand and is not available to purchase from any other manufacturer.

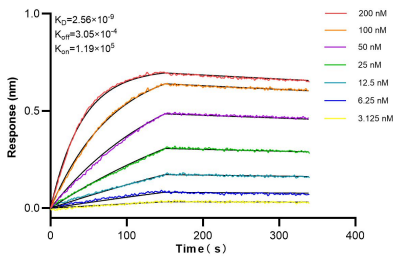
Selected Validation Data



Various lysates were subjected to SDS PAGE followed by western blot with 84073-6-RR (EPCAM/CD326 antibody) at dilution of 1:10000 incubated at room temperature for 1.5 hours. This data was developed using the same antibody clone with 84073-6-PBS in a different storage buffer formulation.



Immunofluorescent analysis of (-20°C Methanol) fixed MCF-7 cells using EPCAM/CD326 antibody (84073-6-RR, Clone: 241243B10) at dilution of 1:400 and CoraLite®488-Conjugated Goat Anti-Rabbit IgG(H+L) (SA00013-2). This data was developed using the same antibody clone with 84073-6-PBS in a different storage buffer formulation.



Biolayer interferometry (BLI) kinetic assays of 84073-6-RR against Human EPCAM/CD326 were performed. The affinity constant is 2.56 nM.