

For Research Use Only

EPCAM/CD326 Recombinant antibody, PBS Only (Detector)

Catalog Number: 84073-4-PBS



Basic Information

Catalog Number:

84073-4-PBS

Size:

1 mg/ml

Source:

Rabbit

Isotype:

IgG

GenBank Accession Number:

NM_002354.3

GeneID (NCBI):

4072

UNIPROT ID:

P16422

Full Name:

epithelial cell adhesion molecule

Calculated MW:

35 kDa

Purification Method:

Protein A purification

CloneNo.:

241243E4

Applications

Tested Applications:

Cytometric bead array, Sandwich ELISA, Indirect ELISA,
Sample test

Species Specificity:

human

Background Information

Storage

Storage:

Store at -80°C.

The product is shipped with ice packs. Upon receipt, store it immediately at -80°C

Storage Buffer:

PBS Only

For technical support and original validation data for this product please contact:

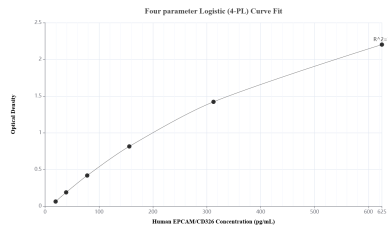
T: 4006900926

E: Proteintech-CN@ptglab.com

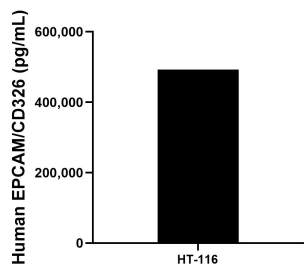
W: ptgcn.com

This product is exclusively available under Proteintech Group brand and is not available to purchase from any other manufacturer.

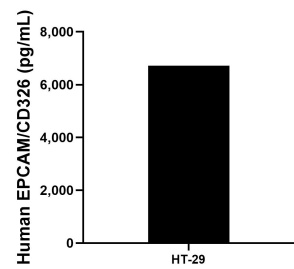
Selected Validation Data



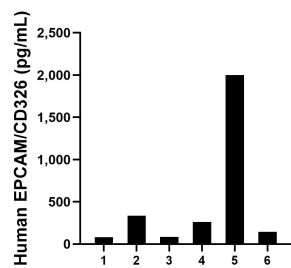
Sandwich ELISA standard curve of MP01009-4, Human EPCAM/CD326 Recombinant Matched Antibody Pair - PBS only. 84073-7-PBS was coated to a plate as the capture antibody and incubated with serial dilutions of standard Eg1370. 84073-4-PBS was HRP conjugated as the detection antibody. Range: 19.5-625 pg/mL.



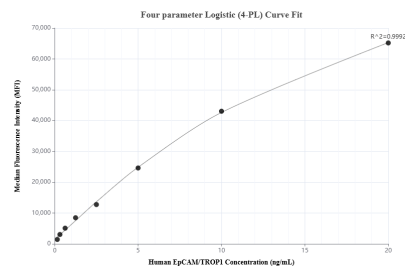
The mean EPCAM/CD326 concentration was determined to be 492922.2 pg/mL in HT-116 cell extract based on a 2.0 mg/mL extract load.



HT-29 were cultured in DMEM supplemented with 10% fetal bovine serum, 2.5 mM L-glutamine, 100 U/mL penicillin, and 100 µg/mL streptomycin sulfate. An aliquot of the cell culture supernate was removed, assayed for human EPCAM/CD326, and measured 6718.5 pg/mL.



Serum of six individual healthy human donors was measured. The EPCAM/CD326 concentration of detected samples was determined to be 484.9 pg/mL with a range of 81.5-2002.2 pg/mL.



Cytometric bead array standard curve of MP01009-2, EPCAM Recombinant Matched Antibody Pair, PBS Only. Capture antibody: 84073-5-PBS. Detection antibody: 84073-4-PBS. Standard: Eg1370. Range: 0.156-20 ng/mL.