

For Research Use Only

Leptin Recombinant antibody, PBS Only (Capture)

Catalog Number: 84072-2-PBS



Basic Information

Catalog Number:

84072-2-PBS

Size:

1 mg/ml

Source:

Rabbit

Isotype:

IgG

GenBank Accession Number:

BC060830

GeneID (NCBI):

3952

UNIPROT ID:

P41159

Full Name:

leptin

Calculated MW:

167 aa, 19 kDa

Purification Method:

Protein A purification

CloneNo.:

240720C8

Applications

Tested Applications:

Cytometric bead array, Sandwich ELISA, Indirect ELISA, Sample test

Species Specificity:

human

Background Information

Storage

Storage:

Store at -80°C.

The product is shipped with ice packs. Upon receipt, store it immediately at -80°C

Storage Buffer:

PBS Only

For technical support and original validation data for this product please contact:

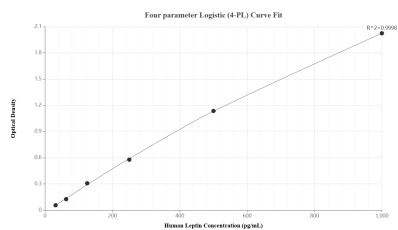
T: 4006900926

E: Proteintech-CN@ptglab.com

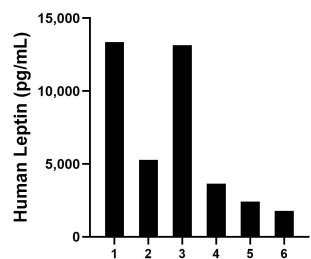
W: ptgcn.com

This product is exclusively available under Proteintech Group brand and is not available to purchase from any other manufacturer.

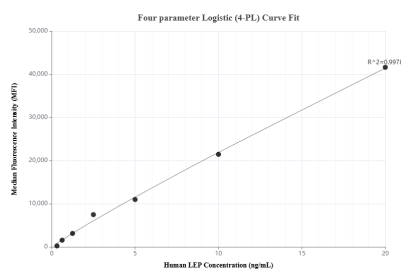
Selected Validation Data



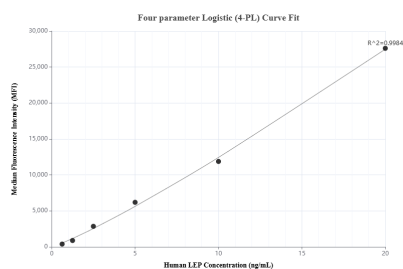
Sandwich ELISA standard curve of MP00993-1, Human Leptin Recombinant Matched Antibody Pair - PBS only. 84072-2-PBS was coated to a plate as the capture antibody and incubated with serial dilutions of standard Eg0834. 84072-4-PBS was HRP conjugated as the detection antibody. Range: 31.3-1000 pg/mL



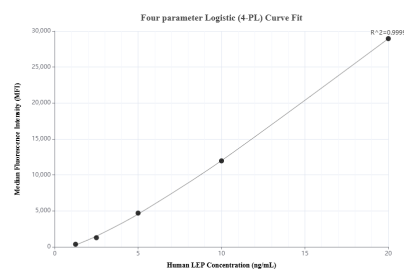
Serum of six individual healthy human donors was measured. The Leptin concentration of detected samples was determined to be 6602.2 pg/mL with a range of 1788.2-13350.2 pg/mL



Cytometric bead array standard curve of MP00993-1, LEP Recombinant Matched Antibody Pair, PBS Only. Capture antibody: 84072-2-PBS. Detection antibody: 84072-4-PBS. Standard: Eg0834. Range: 0.313-20 ng/mL



Cytometric bead array standard curve of MP00993-2, LEP Recombinant Matched Antibody Pair, PBS Only. Capture antibody: 84072-2-PBS. Detection antibody: 84072-1-PBS. Standard: Eg0834. Range: 0.625-20 ng/mL



Cytometric bead array standard curve of MP00993-3, LEP Recombinant Matched Antibody Pair, PBS Only. Capture antibody: 84072-2-PBS. Detection antibody: 84072-3-PBS. Standard: Eg0834. Range: 1.25-20 ng/mL