

For Research Use Only

CD38 Recombinant antibody, PBS Only (Capture)

Catalog Number: 84070-1-PBS



Basic Information

Catalog Number:

84070-1-PBS

Size:

1 mg/ml

Source:

Rabbit

Isotype:

IgG

GenBank Accession Number:

BC007964

GeneID (NCBI):

952

ENSEMBL Gene ID:

ENSG00000004468

UNIPROT ID:

P28907

Full Name:

CD38 molecule

Calculated MW:

300 aa, 34 kDa

Purification Method:

Protein A purification

CloneNo.:

241246A12

Applications

Tested Applications:

IF/ICC, Cytometric bead array, Sandwich ELISA, Indirect ELISA, Sample test

Species Specificity:

human

Background Information

Storage

Storage:

Store at -80°C.

The product is shipped with ice packs. Upon receipt, store it immediately at -80°C

Storage Buffer:

PBS Only

For technical support and original validation data for this product please contact:

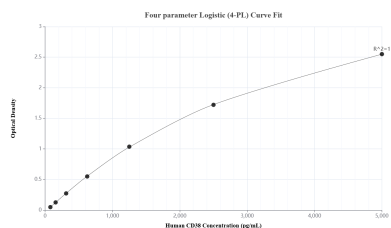
T: 4006900926

E: Proteintech-CN@ptglab.com

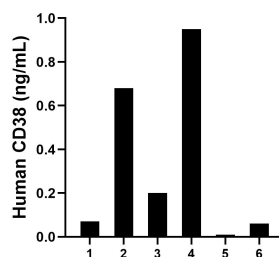
W: ptgcn.com

This product is exclusively available under Proteintech Group brand and is not available to purchase from any other manufacturer.

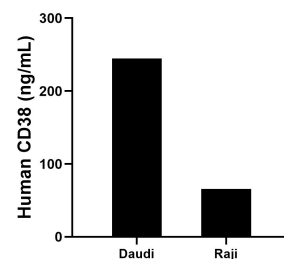
Selected Validation Data



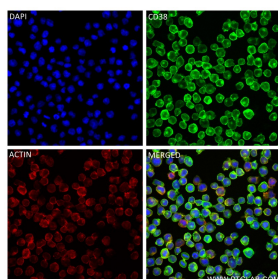
Sandwich ELISA standard curve of MP00991-2, Human CD38 Recombinant Matched Antibody Pair - PBS only. 84070-1-PBS was coated to a plate as the capture antibody and incubated with serial dilutions of standard Eg0110. 84070-2-PBS was HRP conjugated as the detection antibody. Range: 78.1-5000 pg/mL.



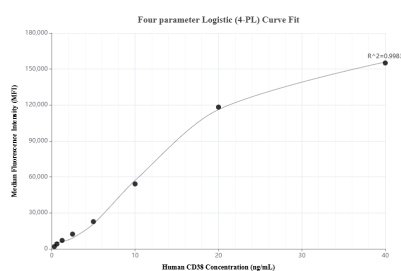
Serum of six individual healthy human donors was measured. The CD38 concentration of detected samples was determined to be 0.3 ng/mL with a range of ND-1.0 ng/mL.



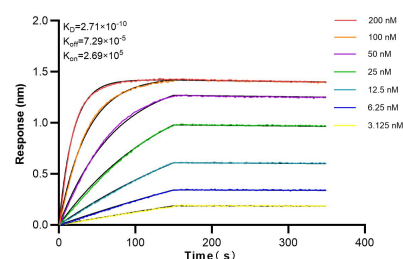
The mean CD38 concentration was determined to be 244.5 ng/mL in Daudi cell extract based on a 1.8 mg/mL extract load and 65.6 ng/mL in Raji cell extract based on a 1.2 mg/mL extract load.



Immunofluorescent analysis of (4% PFA) fixed Raji cells using CD38 antibody (84070-1-RR, Clone: 241246A12) at dilution of 1:250 and CoraLite®488-Conjugated Goat Anti-Rabbit IgG(H+L) (SA00013-2), CL594-Phalloidin (red). This data was developed using the same antibody clone with 84070-1-PBS in a different storage buffer formulation.



Cytometric bead array standard curve of MP00991-2, CD38 Recombinant Matched Antibody Pair, PBS Only. Capture antibody: 84070-1-PBS. Detection antibody: 84070-2-PBS. Standard: Eg0110. Range: 0.313-40 ng/mL.



Bi-layer interferometry (BLI) kinetic assays of 84070-1-RR against Human CD38 were performed. The affinity constant is 0.271 nM.