

For Research Use Only

CD138/Syndecan-1 Recombinant antibody

Catalog Number: 84069-6-RR



Basic Information

Catalog Number:

84069-6-RR

Size:

900 µg/ml

Source:

Rabbit

Isotype:

IgG

GenBank Accession Number:

NM_011519.2

GeneID (NCBI):

20969

UNIPROT ID:

P18828-1

Full Name:

syndecan 1

Calculated MW:

33 kDa

Observed MW:

65 kDa

Purification Method:

Protein A purification

CloneNo.:

241278A4

Recommended Dilutions:

WB 1:2000-1:10000

Applications

Tested Applications:

WB, ELISA

Species Specificity:

mouse, rat

Positive Controls:

WB : mouse kidney tissue, mouse liver tissue, rat liver tissue

Background Information

CD138, also named as Syndecan-1 (SDC1), is an integral membrane protein. It participates in cell proliferation, cell migration and cell-matrix interactions via its receptor for extracellular matrix proteins. It is a heparan sulfate proteoglycan expressed on the surface of, and actively shed by, myeloma cells. Altered syndecan-1 expression has been detected in several different tumor types. CD138 was regarded as a useful marker for labeling normal and neoplastic plasma cells and plasmacytoid lymphomas. CD138 has a calculated molecular weight of 32.5 kDa, the apparent molecular weight is higher due to extensive glycosylation.

Storage

Storage:

Store at -20°C. Stable for one year after shipment.

Storage Buffer:

PBS with 0.02% sodium azide and 50% glycerol pH 7.3.

Aliquoting is unnecessary for -20°C storage

For technical support and original validation data for this product please contact:

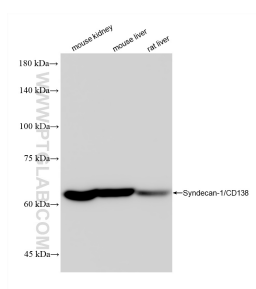
T: 4006900926

E: Proteintech-CN@ptglab.com

W: ptgcn.com

This product is exclusively available under Proteintech Group brand and is not available to purchase from any other manufacturer.

Selected Validation Data



Various lysates were subjected to SDS PAGE followed by western blot with 84069-6-RR (CD138/Syndecan-1 antibody) at dilution of 1:5000 incubated at room temperature for 1.5 hours.