

For Research Use Only

Mouse CD138/Syndecan-1 Recombinant antibody, PBS Only (Detector)

Catalog Number: 84069-1-PBS



Basic Information

Catalog Number: 84069-1-PBS	GenBank Accession Number: NM_011519.2	Purification Method: Protein A purification
Concentration: 1 mg/ml	GeneID (NCBI): 20969	CloneNo.: 241278C7
Source: Rabbit	UNIPROT ID: P18828-1	
Isotype: IgG	Full Name: syndecan 1	
Immunogen Catalog Number: EG1221	Calculated MW: 33 kDa	

Applications

Tested Applications:
Cytometric bead array, Sandwich ELISA, Indirect ELISA,
Sample test

Species Specificity:
mouse

Background Information

Storage

Storage:
Store at -80°C.
The product is shipped with ice packs. Upon receipt, store it immediately at -80°C

Storage Buffer:
PBS only, pH7.3

For technical support and original validation data for this product please contact:

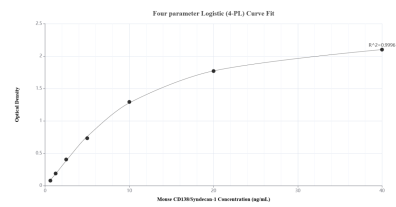
T: 4006900926

E: Proteintech-CN@ptglab.com

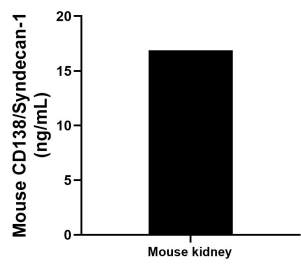
W: ptgcn.com

This product is exclusively available under Proteintech Group brand and is not available to purchase from any other manufacturer.

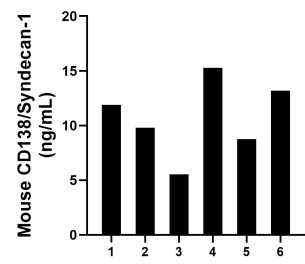
Selected Validation Data



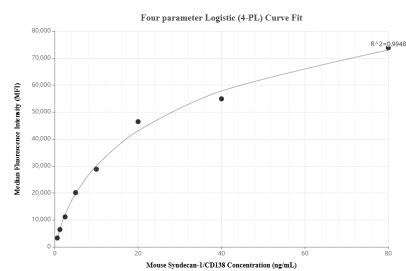
Sandwich ELISA standard curve of MP00990-2, Mouse CD138/Syndecan-1 Recombinant Matched Antibody Pair - PBS only. 84069-3-PBS was coated to a plate as the capture antibody and incubated with serial dilutions of standard Eg1221. 84069-1-PBS was HRP conjugated as the detection antibody. Range: 0.625-40 ng/mL



The mean CD138/Syndecan-1 concentration was determined to be 16.88 ng/mL in mouse kidney tissue extract based on a 3.10 mg/mL extract load.



Serum of six mice was measured. The CD138/Syndecan-1 concentration of detected samples was determined to be 10.74 ng/mL with a range of 5.54-15.27 ng/mL



Cytometric bead array standard curve of MP00990-2, MOUSE CD138/Syndecan-1 Recombinant Matched Antibody Pair, PBS Only. Capture antibody: 84069-3-PBS. Detection antibody: 84069-1-PBS. Standard: Eg1221. Range: 0.625-80 ng/mL