

For Research Use Only

Clusterin Recombinant antibody, PBS Only (Detector)

Catalog Number: 84067-3-PBS



Basic Information

Catalog Number:

84067-3-PBS

Size:

1 mg/ml

Source:

Rabbit

Isotype:

IgG

GenBank Accession Number:

BC010514

GeneID (NCBI):

1191

UNIPROT ID:

P10909

Full Name:

clusterin

Calculated MW:

449 aa, 53 kDa

Purification Method:

Protein A purification

CloneNo.:

241277H2

Applications

Tested Applications:

Cytometric bead array, Sandwich ELISA, Indirect ELISA,
Sample test

Species Specificity:

human

Background Information

Storage

Storage:

Store at -80°C.

The product is shipped with ice packs. Upon receipt, store it immediately at -80°C

Storage Buffer:

PBS Only

For technical support and original validation data for this product please contact:

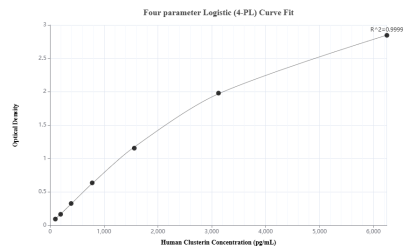
T: 4006900926

E: Proteintech-CN@ptglab.com

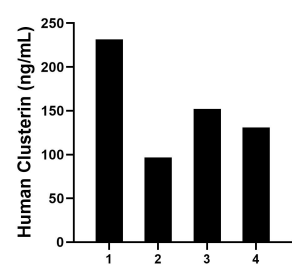
W: ptgcn.com

This product is exclusively available under Proteintech Group brand and is not available to purchase from any other manufacturer.

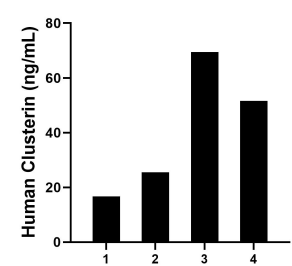
Selected Validation Data



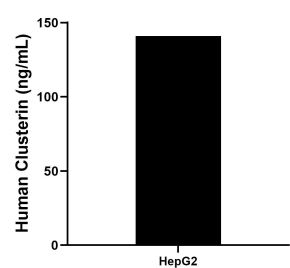
Sandwich ELISA standard curve of MP00986-3, Human Clusterin Recombinant Matched Antibody Pair - PBS only. 84067-1-PBS was coated to a plate as the capture antibody and incubated with serial dilutions of standard Eg0225. 84067-3-PBS was HRP conjugated as the detection antibody. Range: 97.7-6250 pg/mL



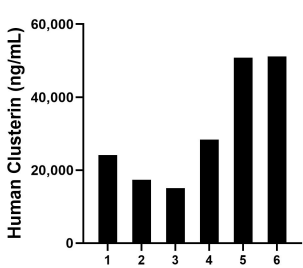
Saliva of four individual healthy human donors was measured. The human Clusterin concentration of detected samples was determined to be 152.81 ng/mL with a range of 95.56 - 231.47 ng/mL.



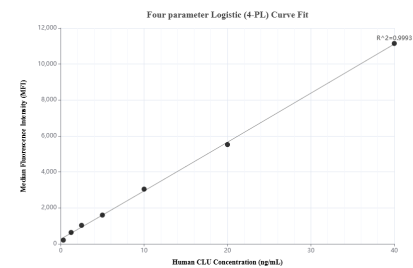
Urine of four individual healthy human donors was measured. The human Clusterin concentration of detected samples was determined to be 40.81 ng/mL with a range of 16.72 - 69.41 ng/mL.



HepG2 were cultured in DMEM supplemented with 10% fetal bovine serum, 2.5 mM L-glutamine, 100 U/mL penicillin, and 100 µg/mL streptomycin sulfate. An aliquot of the cell culture supernate was removed, assayed for human Clusterin, and measured 140.90 ng/mL.



Serum of six individual healthy human donors was measured. The human Clusterin concentration of detected samples was determined to be 31,152.14 ng/mL with a range of 15,052.59 - 51,157.85 ng/mL.



Cytometric bead array standard curve of MP00986-1, Clusterin Recombinant Matched Antibody Pair, PBS Only. Capture antibody: 84067-2-PBS. Detection antibody: 84067-3-PBS. Standard: Eg0225. Range: 0.313-40 ng/mL.