

For Research Use Only

SRP19 Recombinant antibody, PBS Only (Detector)

Catalog Number: 84061-3-PBS



Basic Information

Catalog Number: 84061-3-PBS	GenBank Accession Number: BC010947	Purification Method: Protein A purification
Size: 1 mg/ml	GeneID (NCBI): 6728	CloneNo.: 241219E9
Source: Rabbit	UNIPROT ID: P09132	
Isotype: IgG	Full Name: signal recognition particle 19kDa	
Immunogen Catalog Number: AG8903	Calculated MW: 144 aa, 16 kDa	
	Observed MW: 17 kDa	

Applications

Tested Applications:
WB, IF/ICC, Cytometric bead array, Indirect ELISA

Species Specificity:
human, mouse

Background Information

The signal recognition particle (SRP) is one of the few functional small RNP particles. The SRP couples the synthesis of membrane and secretory proteins across or into the endoplasmic reticulum (ER) membrane in eukaryotes, as well as across the bacterial plasma membrane, and chloroplast thylakoid membranes. The mammalian SRP is composed of a 7S (or 7SL) RNA and six different proteins, SRP9, SRP14, SRP19, SRP54, SRP68 and SRP72. All of the components of SRP, including SRP RNA, participate directly in the overall protein targeting process. SRP19 binds directly to 7S RNA and mediates binding of the 54 kDa subunit of the SRP. SRP19 was shown to significantly enhance SRP54 attachment to helix 8 of 7SL RNA.

Storage

Storage:
Store at -80°C.
The product is shipped with ice packs. Upon receipt, store it immediately at -80°C

Storage Buffer:
PBS Only

For technical support and original validation data for this product please contact:

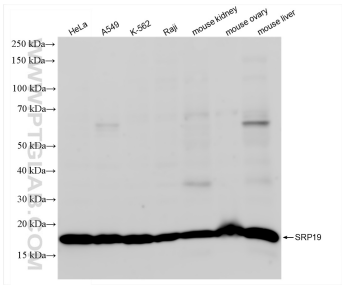
T: 4006900926

E: Proteintech-CN@ptglab.com

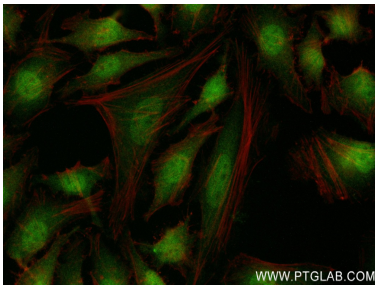
W: ptgcn.com

This product is exclusively available under Proteintech Group brand and is not available to purchase from any other manufacturer.

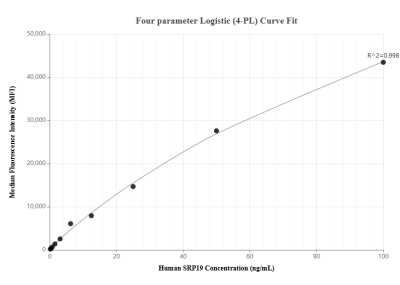
Selected Validation Data



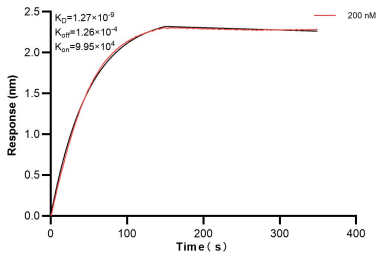
Various lysates were subjected to SDS PAGE followed by western blot with 84061-3-RR (SRP19 antibody) at dilution of 1:10000 incubated at room temperature for 1.5 hours. This data was developed using the same antibody clone with 84061-3-PBS in a different storage buffer formulation.



Immunofluorescent analysis of (4% PFA) fixed HeLa cells using SRP19 antibody (84061-3-RR, Clone: 241219E9) at dilution of 1:250 and CoraLite®488-Conjugated AffiniPure Goat Anti-Rabbit IgG(H+L) (SA00013-2), CL594-Phalloidin (red). This data was developed using the same antibody clone with 84061-3-PBS in a different storage buffer formulation.



Cytometric bead array standard curve of MP00977-1, SRP19 Recombinant Matched Antibody Pair, PBS Only. Capture antibody: 84061-1-PBS. Detection antibody: 84061-3-PBS. Standard: Ag8903. Range: 0.195-100 ng/mL



Biolayer interferometry (BLI) kinetic assay of 84061-3-PBS against Human SRP19 was performed. The affinity constant is 1.27 nM.