

For Research Use Only

KLK3/PSA Recombinant antibody, PBS Only (Capture)

Catalog Number:84059-9-PBS



Basic Information

Catalog Number: 84059-9-PBS	GenBank Accession Number: NM_001648.2	Purification Method: Protein A purification
Size: 1 mg/ml	GeneID (NCBI): 354	CloneNo.: 241223D6
Source: Rabbit	UNIPROT ID: P07288-1	
Isotype: IgG	Full Name: kallikrein-related peptidase 3	
	Calculated MW: 29 kDa	

Applications

Tested Applications:
Sandwich ELISA, Indirect ELISA, Sample test

Species Specificity:
human

Background Information

Storage

Storage:
Store at -80°C.
The product is shipped with ice packs. Upon receipt, store it immediately at -80°C

Storage Buffer:
PBS Only

For technical support and original validation data for this product please contact:

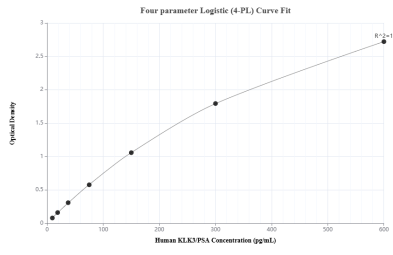
T: 4006900926

E: Proteintech-CN@ptglab.com

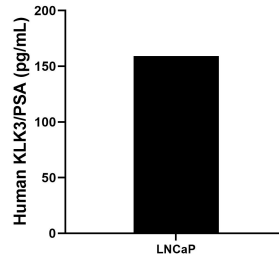
W: ptgcn.com

This product is exclusively available under Proteintech Group brand and is not available to purchase from any other manufacturer.

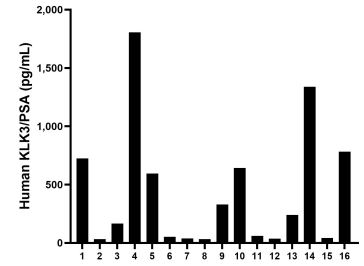
Selected Validation Data



Sandwich ELISA standard curve of MP00975-3, Human KLK3/PSA Recombinant Matched Antibody Pair - PBS only. 84059-9-PBS was coated to a plate as the capture antibody and incubated with serial dilutions of standard Ego869. 84059-4-PBS was HRP conjugated as the detection antibody. Range: 9.38-600 pg/mL



LNCaP human prostate cancer cells were cultured in RPMI supplemented with 10% fetal bovine serum, 10 mM HEPES and 1 nM sodium pyruvate. An aliquot of the cell culture supernate was removed, assayed for human KLK3/PSA, and measured 159.3 pg/mL



Serum of sixteen individual healthy human donors was measured. The human KLK3/PSA concentration of detected samples was determined to be 432.7 pg/mL with a range of 32.3 - 1804.8 pg/mL