

For Research Use Only

# KLK3/PSA Recombinant antibody, PBS Only (Capture/Detector)

Catalog Number: 84059-4-PBS



## Basic Information

Catalog Number:

84059-4-PBS

Size:

1 mg/ml

Source:

Rabbit

Isotype:

IgG

GenBank Accession Number:

NM\_001648.2

GeneID (NCBI):

354

UNIPROT ID:

P07288-1

Full Name:

kallikrein-related peptidase 3

Calculated MW:

29 kDa

Purification Method:

Protein A purification

CloneNo.:

241223H3

## Applications

Tested Applications:

Cytometric bead array, Sandwich ELISA, Indirect ELISA, Sample test

Species Specificity:

human

## Background Information

### Storage

Storage:

Store at -80°C.

**The product is shipped with ice packs. Upon receipt, store it immediately at -80°C**

Storage Buffer:

PBS Only

For technical support and original validation data for this product please contact:

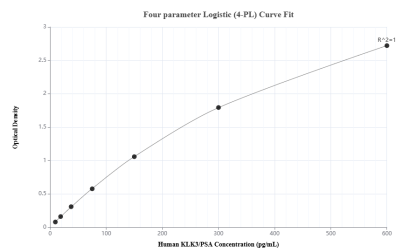
T: 4006900926

E: [Proteintech-CN@ptglab.com](mailto:Proteintech-CN@ptglab.com)

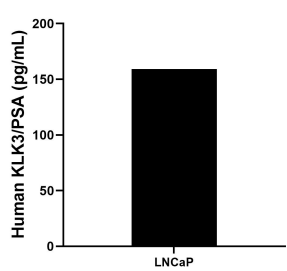
W: [ptgcn.com](http://ptgcn.com)

**This product is exclusively available under Proteintech Group brand and is not available to purchase from any other manufacturer.**

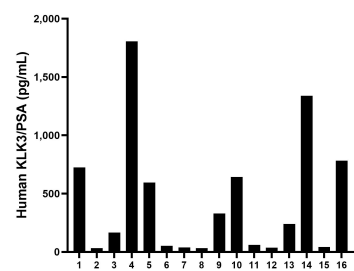
## Selected Validation Data



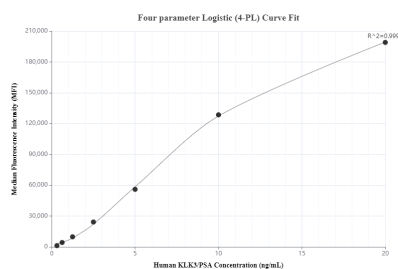
Sandwich ELISA standard curve of MP00975-3, Human KLK3/PSA Recombinant Matched Antibody Pair - PBS only. 84059-9-PBS was coated to a plate as the capture antibody and incubated with serial dilutions of standard Eg0869. 84059-4-PBS was HRP conjugated as the detection antibody. Range: 9.38-600 pg/mL



LNCaP human prostate cancer cells were cultured in RPMI supplemented with 10% fetal bovine serum, 10 mM HEPES and 1 mM sodium pyruvate. An aliquot of the cell culture supernate was removed, assayed for human KLK3/PSA, and measured 159.3 pg/mL



Serum of sixteen individual healthy human donors was measured. The human KLK3/PSA concentration of detected samples was determined to be 432.7 pg/mL with a range of 32.3 - 1804.8 pg/mL



Cytometric bead array standard curve of MP00975-2, KLK3/PSA Recombinant Matched Antibody Pair, PBS Only. Capture antibody: 84059-4-PBS. Detection antibody: 84059-1-PBS. Standard: Eg0869. Range: 0.313-20 ng/mL