

For Research Use Only

RNF40 Recombinant antibody, PBS Only (Detector)

Catalog Number: 84058-3-PBS



Basic Information

Catalog Number:

84058-3-PBS

Concentration:

1 mg/ml

Source:

Rabbit

Isotype:

IgG

Immunogen Catalog Number:

AG8047

GenBank Accession Number:

BC006133

GeneID (NCBI):

9810

UNIPROT ID:

O75150

Full Name:

ring finger protein 40

Calculated MW:

114 kDa

Purification Method:

Protein A purification

CloneNo.:

241214E10

Applications

Tested Applications:

Cytometric bead array, Sandwich ELISA, Indirect ELISA,
Sample test

Species Specificity:

human

Background Information

Storage

Storage:

Store at -80°C.

The product is shipped with ice packs. Upon receipt, store it immediately at -80°C

Storage Buffer:

PBS Only

For technical support and original validation data for this product please contact:

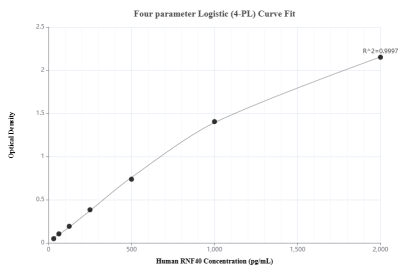
T: 4006900926

E: Proteintech-CN@ptglab.com

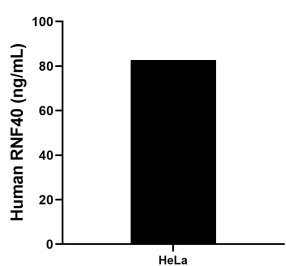
W: ptgcn.com

This product is exclusively available under Proteintech Group brand and is not available to purchase from any other manufacturer.

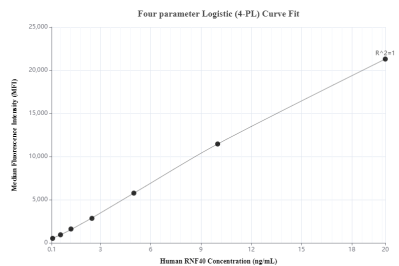
Selected Validation Data



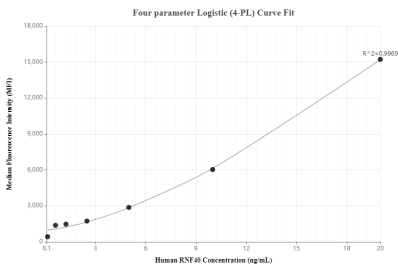
Sandwich ELISA standard curve of MP00974-1, Human RNF40 Recombinant Matched Antibody Pair - PBS only. 84058-1-PBS was coated to a plate as the capture antibody and incubated with serial dilutions of standard Ag8047. 84058-3-PBS was HRP conjugated as the detection antibody. Range: 31.3-2000 pg/mL



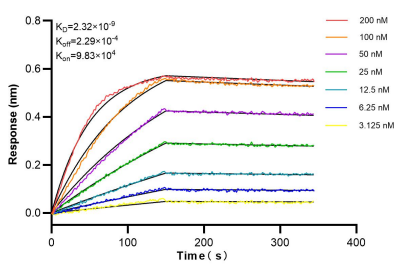
The mean RNF40 concentration was determined to be 82.72 ng/mL in HeLa cell extract based on a 2.0 mg/mL extract load.



Cytometric bead array standard curve of MP00974-1, RNF40 Recombinant Matched Antibody Pair, PBS Only. Capture antibody: 84058-1-PBS. Detection antibody: 84058-3-PBS. Standard: Ag8047. Range: 0.156-20 ng/mL



Cytometric bead array standard curve of MP00974-2, RNF40 Recombinant Matched Antibody Pair, PBS Only. Capture antibody: 84058-2-PBS. Detection antibody: 84058-3-PBS. Standard: Ag8047. Range: 0.156-20 ng/mL



Biolayer interferometry (BLI) kinetic assays of 84058-3-RR against Human RNF40 were performed. The affinity constant is 2.32 nM.